



# Enterprise architecture as a core building block of the Accenture Banking Platform

Strategic Partner Meeting of BOC Group 2024

# Introduction



**Ralph Schimpl**

**Accenture TiGital**  
Enterprise Architect  
Head of Architecture Office

**Jürgen Zangerl**

**Accenture TiGital**  
Enterprise Architect  
Architecture Office



Accenture is a global consulting and services company that supports organizations in the areas of strategy, technology and operations to improve performance and drive innovation.

Accenture TiGital is a 100% subsidiary of Accenture Austria.



# Agenda

- 01 The takeover of ARZ by Accenture
- 02 Accenture Banking Platform (as a Service)
- 03 Transformation and adaptability
- 04 Tools and methods
- 05 Insights, questions and answers



# The initial situation

## ARZ Allgemeines Rechenzentrum GmbH

AMBITIONIERT ROUTINIERT ZIELORIENTIERT



SOFTWARE / IT-SERVICE

WIR ÜBER UNS

SUPPORT

REFERENZEN

KARRIERE

600

Staff Level

7,8 Mio.

Transactions per Day

5,3 Mio.

Accounts

12.400

Workstations

ARZ is a competence center for IT services. With our range of services, we ensure continuous, flawless technical operation. We offer the highest availability, data security and best performance in the production area.

### PRODUCTS & SERVICES

#### Our range of services includes :

- › Core Banking Systems
- › Consulting
- › Decentralized System Services
- › Online Portals
- › Training at the ARZ Training Center
- › SAP
- › Data Warehousing
- › Support
- › Production

#### Financial service provider

##### We service the following institutions of the Volksbank association:

- › 8 Volksbanken
- › Österreichische Ärzte- und Apothekerbank AG
- › Österreichischer Genossenschaftsverband (Schulze-Delitzsch)

##### We also serve the following mortgage and private banks:

- › Addiko Bank AG
- › Austrian Anadi Bank AG
- › Bank Winter & Co. AG
- › Schelhammer Capital Bank AG
- › Bankhaus Spängler & Co. Aktiengesellschaft
- › DolomitenBank Osttirol-Westkärnten eG
- › Generali Bank AG
- › Hello bank!
- › HYPO NOE Landesbank für Niederösterreich und Wien AG
- › Hypo Tirol Bank AG
- › Hypo Vorarlberg Bank
- › Marchfelder Bank eG
- › Schoellerbank Aktiengesellschaft
- › HYPO-BANK BURGENLAND AG
- › bank99

#### More Customers

##### We service hospitals, local authorities, ...:

- › Tirol Kliniken GmbH

The collaboration between ARZ and Tirol Kliniken GmbH (then TILAK) led to the founding of a joint company, "AT Solution Partner EDV Beratungs- und Vertriebs GmbH" (ATSP), in 2002. The letters A and T stand for the two shareholders ARZ and TILAK, "Solution" stands for solution competence and "Partner" is intended to represent the high importance of customer orientation in the company strategy.

- › AT Solution Partner EDV Beratungs- & Vertriebs GmbH
- › Land Tirol
- › HETA ASSET RESOLUTION AG
- › immigon portfolioabbau ag
- › PSA Payment Services Austria GmbH

[ARZ Allgemeines Rechenzentrum GmbH \(archive.org\)](https://www.archive.org/details/ARZ-Allgemeines-Rechenzentrum-GmbH)





# The initial situation

## Enterprise architecture management at ARZ



### BANKS AND ARZ

- Banks are holders of the ARZ
- Budgeting of IT transformation projects is carried out by banks (owners)
- IT enterprise architecture management by banks and ARZ (architecture forum)



### PARTNERSHIP WITH BOC

- Most banks use ADONIS for process management, ADOIT for architecture management and now ADOGRC for risk management.
- ARZ provides BOC EAM Suite Tools as a service
- Partnership with BOC is formed
- BOC supports banks and ARZ

# The takeover

## Accenture takes over ARZ staff and assets



### Accenture agrees to acquire ARZ to expand its banking platform-as-a-service offering across Europe

Wien/Innsbruck (OTS)- Accenture (NYSE: ACN) hat die Übernahme des ARZ (Allgemeines Rechenzentrum GmbH) vereinbart. Das ARZ ist ein auf den österreichischen Bankensektor spezialisierter Technologiedienstleister. Mit der Übernahme erweitert Accenture sein Cloud-basiertes Platform-as-a-service-Angebot für Banken, das von Kernbankdienstleistungen über Online-Banking bis hin zu regulatorischen Dienstleistungen für Bankkunden in ganz Europa reicht.

[Accenture agrees to acquire ARZ to expand its banking platform-as-a-service offering across Europe | Accenture GmbH, 01.06.2022 \(ots.at\)](#)

DECEMBER 01, 2022

### Accenture Completes Acquisition of ARZ's Staff and Business Assets

VIENNA and INNSBRUCK, Austria; Dec. 1, 2022 – Accenture (NYSE: ACN) has completed its acquisition of the people and business assets of Allgemeines Rechenzentrum GmbH (ARZ), a technology service provider focused on the banking sector in Austria. Financial terms of the transaction, [previously announced](#) on June 1, were not disclosed.

[Accenture Completes Acquisition of ARZ's Staff and Business Assets](#)



die Redaktion 02.06.2022

### ARZ: Accenture buys banking data center in Tyrol and expands

Accenture wants to develop an internationally oriented center for banking IT in Tyrol. The basis for this is the acquisition of a data center.

[ARZ: Accenture buys banking data center | brutkasten](#)

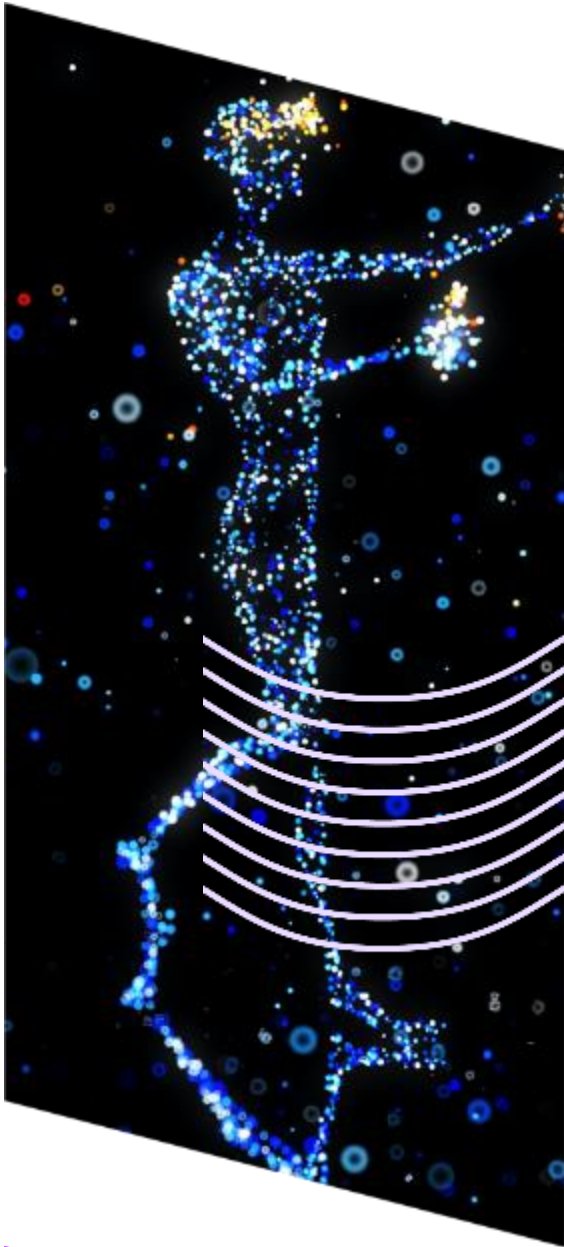
### Accenture takeover of ARZ completed

NEWS, IMMOBILIEN | Redaktion | 06.12.2022

The focus is now on expanding the Innsbruck site and developing banking for the future "Made in Austria".

[Accenture takeover of ARZ completed " Leadersnet](#)

# Agenda



01

The takeover of ARZ by Accenture

02

**Accenture Banking Platform (as a Service)**

03

Transformation and adaptability

04

Tools and methods

05

Insights, questions and answers



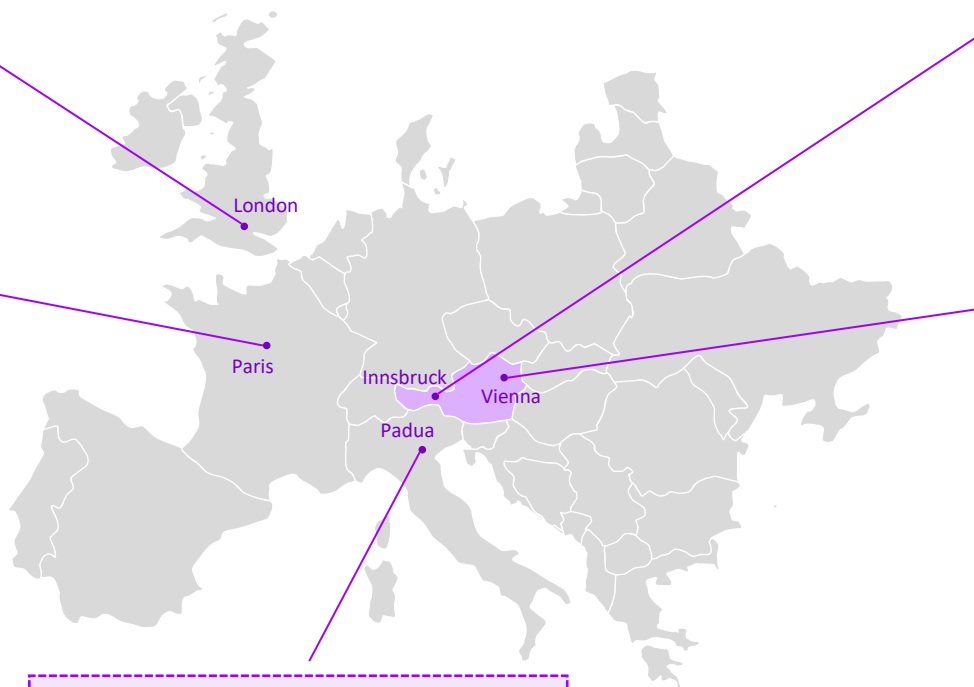
# Accenture platform operations

## Acquisitions in Europe in the financial services sector

### ATOM - Applied Technology & Operations for Markets

- **Acquisition:** 2016
- **Employees:** > 2,000
- **Customers:** > 20
- **Focus:** Capital markets platform operation

[Applied Technology and Operations for Markets \(ATOM\) | Accenture](#)



### Accenture TiGital

- **Acquisition:** 2022
- **Employees:** >600
- **Customers:** >20
- **Focus:** Platform operations for retail banking, corporate banking, private banking

### AFAST - Accenture Financial Advanced Technology & Solutions

- **Acquisition:** 2018
- **Employees:** 2,200
- **Customers:** ~100
- **Focus:** Banking and insurance platform operations, intelligent operations, transformation & regulation for financial institutions

[Accenture Completes Acquisition of Intesa Sanpaolo's Interest in SEC Servizi Spa](#)



[Accenture Completes Acquisition of ARZ's Staff and Business Assets](#)





# Accenture Banking Platform (as a Service)

## A global collaboration model



Competence Center for Banking IT Services



3 locations Innsbruck, Manila, Vienna



1200+ employees



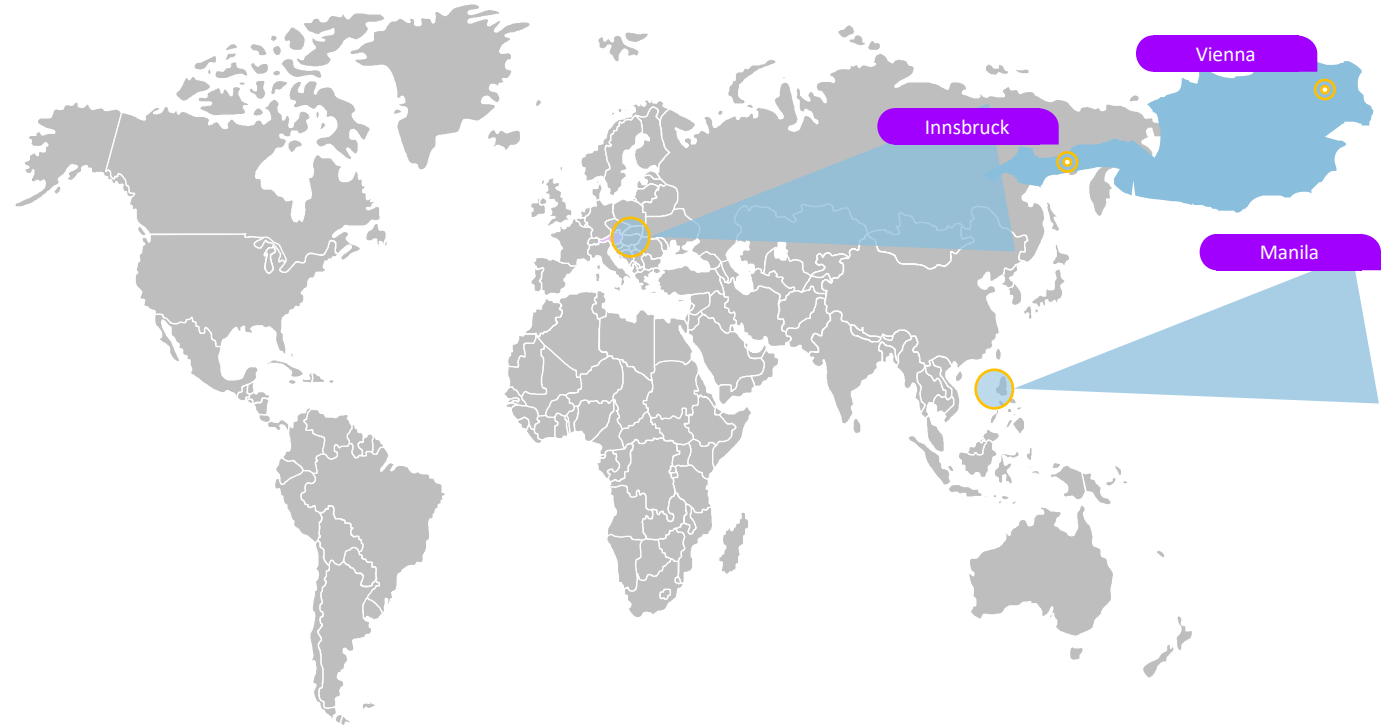
Over 20 banks and customers in other industries



Regulatory environment of the ECB, OeNB and FMA

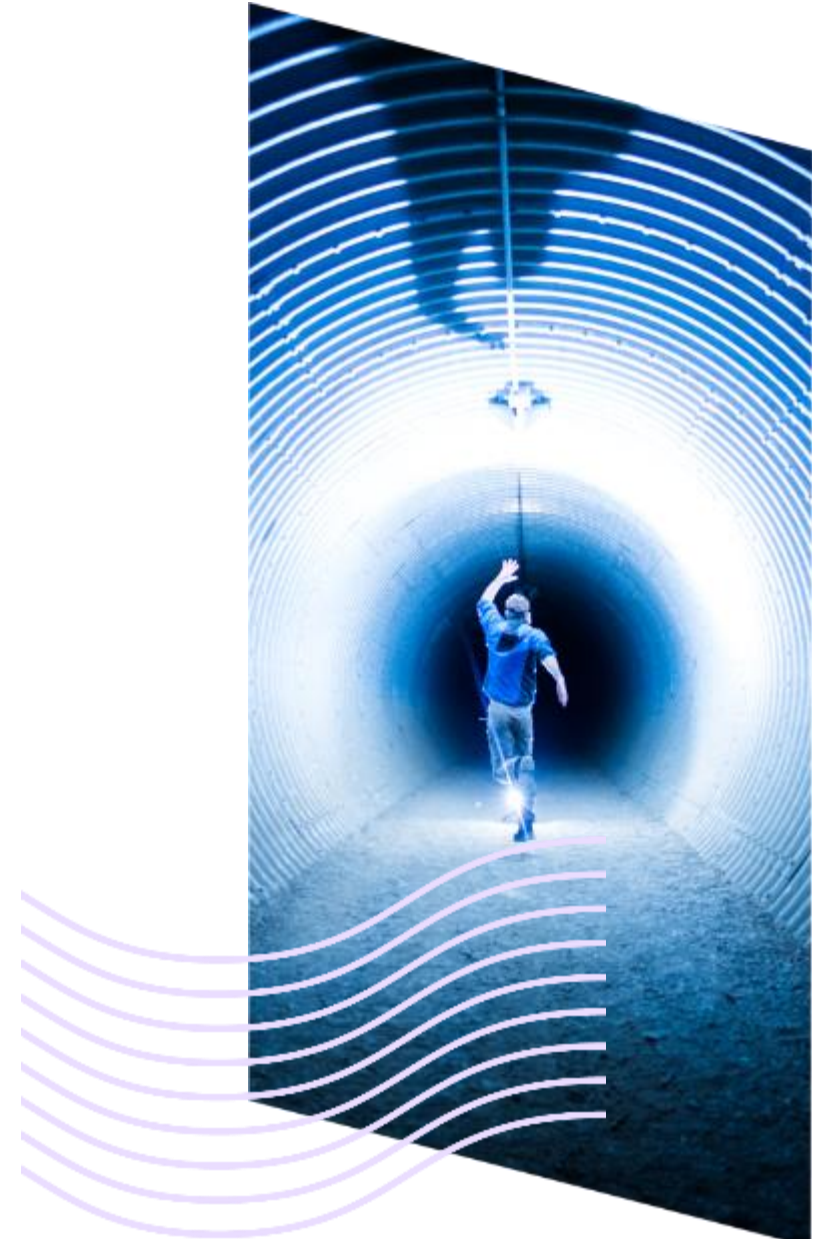


ISAE3402-Type2 & ISO 27001 certified



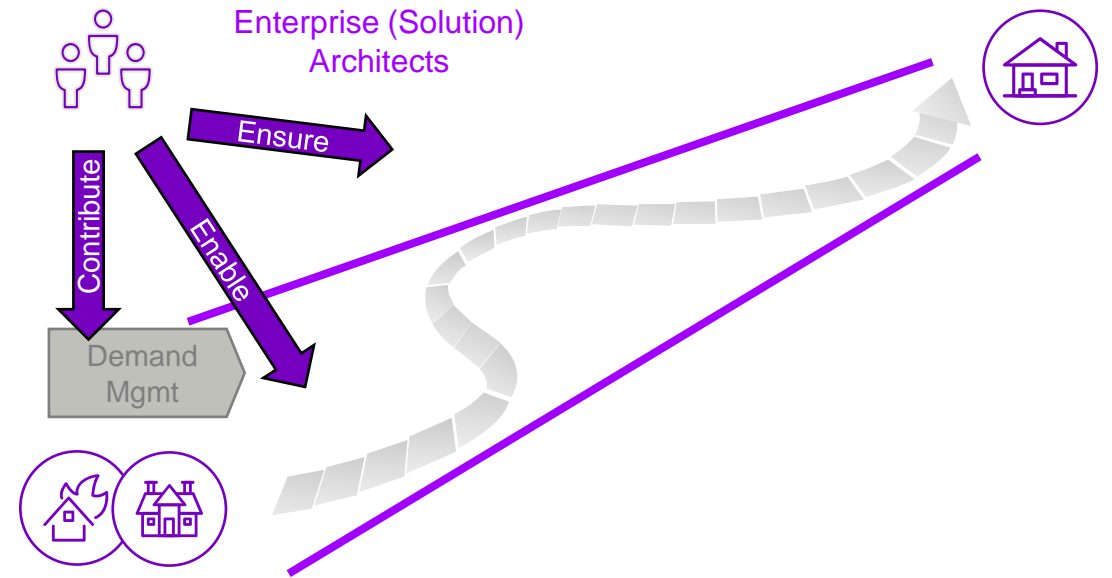
# Agenda

- 01 The takeover of ARZ by Accenture
- 02 Accenture Banking Platform (as a Service)
- 03 **Transformation and adaptability**
- 04 Tools and methods
- 05 Insights, questions and answers



# Transformation and adaptability

## Programs for the future



### Transformation programs

- Large number of projects, in addition to the regular project portfolio
- Multiplication of the usual project volume for the core workforce
  - Assessments / analyses
  - Transformation of work
  - Implementation

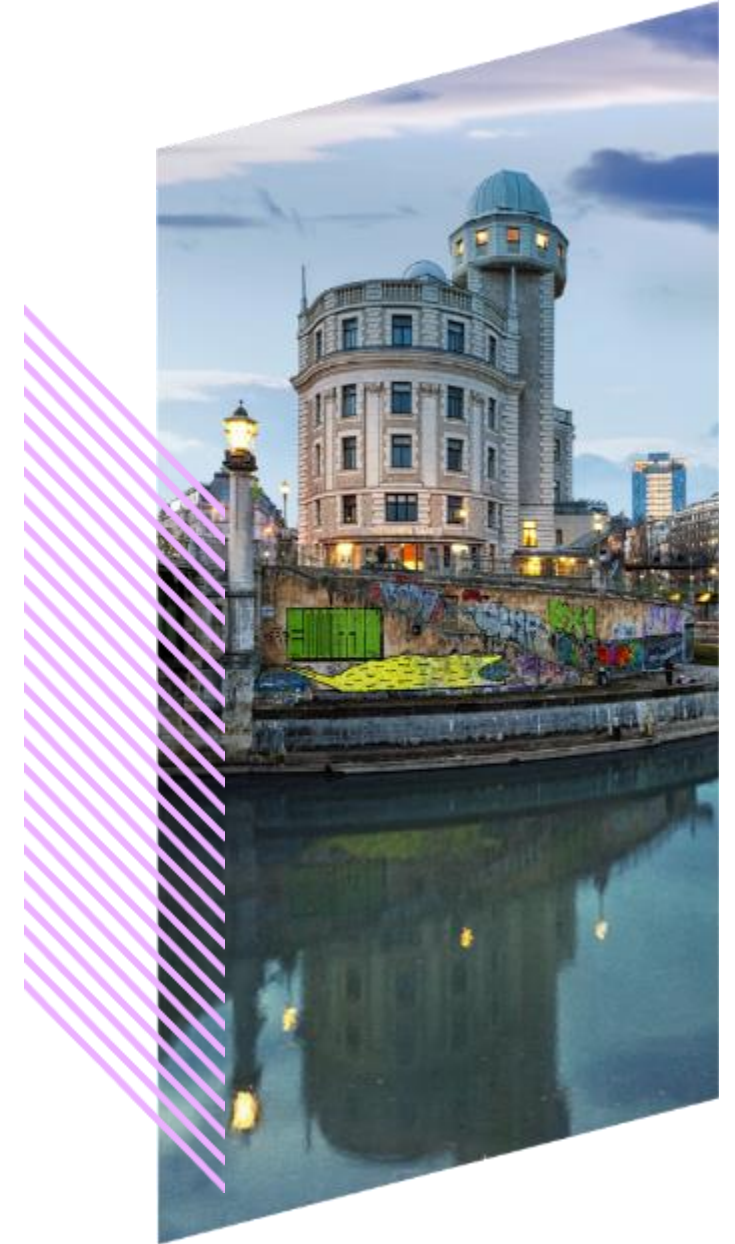
# Transformation and adaptability

## Culture of the company and its people



# Agenda

- 01** The takeover of ARZ by Accenture
- 02** Accenture Banking Platform (as a Service)
- 03** Transformation and adaptability
- 04** **Tools and methods**
- 05** Insights, questions and answers





# Tools and methods

## Transparency in architecture decisions



An **architecture decision** is the selection of one option from several possibilities.



An **architecture decision** has an impact on other applications, technologies, processes or stakeholders.



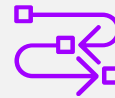
The choice between options can be described as an **architecture decision** if the effects of the choice on the architecture cannot be deduced, but are open and are weighed up on the basis of advantages and disadvantages.



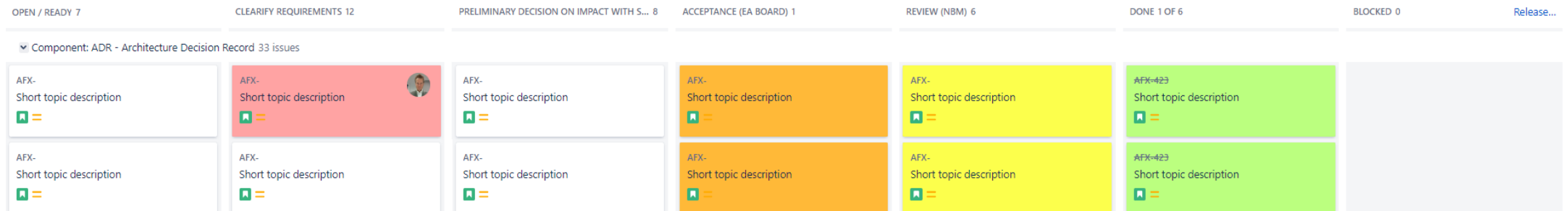
**Decision criteria** are the impact on the architecture, total cost of ownership (TCO), including the cost of technological debt, impact on alignment and time criticality.



An **architecture decision is not** the selection of one option from many options that affects a single stakeholder and has no relation to other processes, applications and technologies

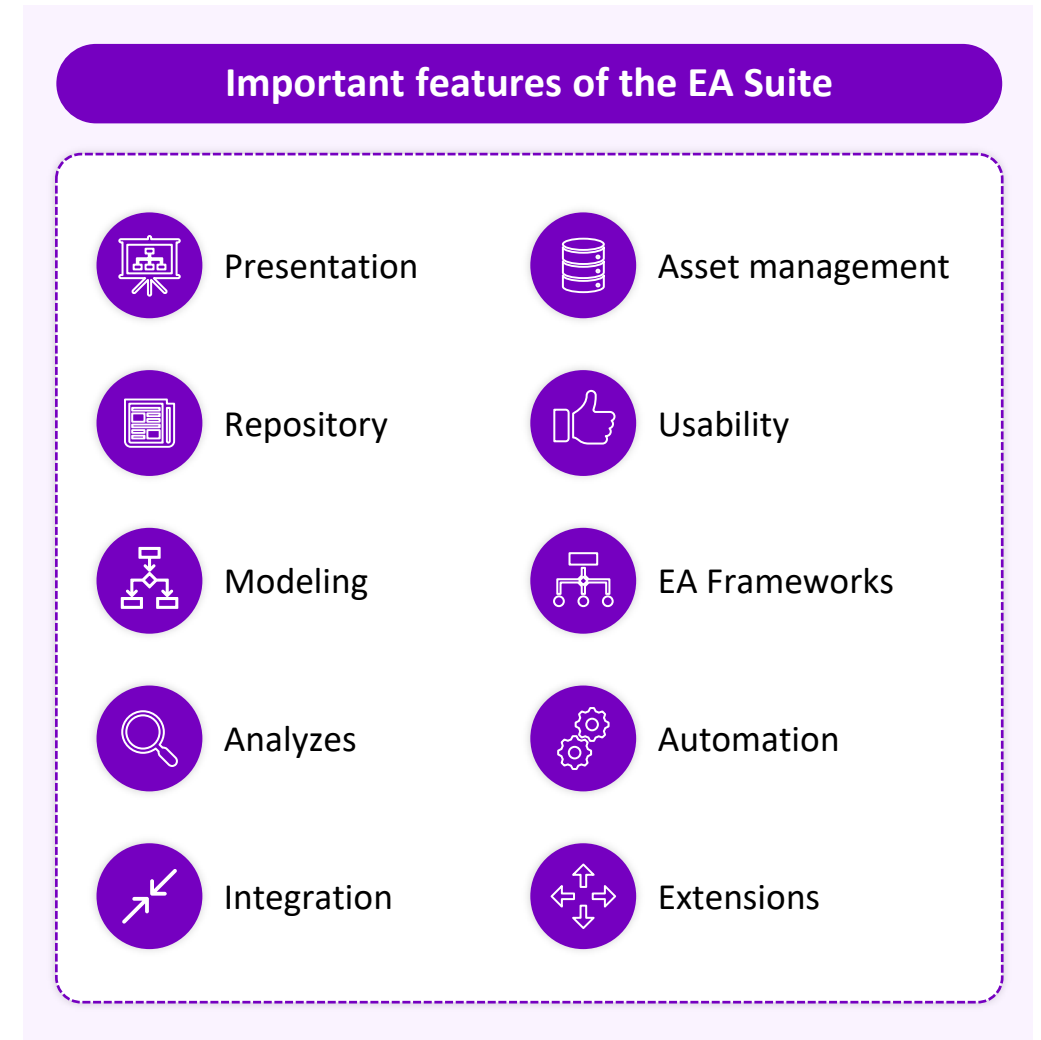
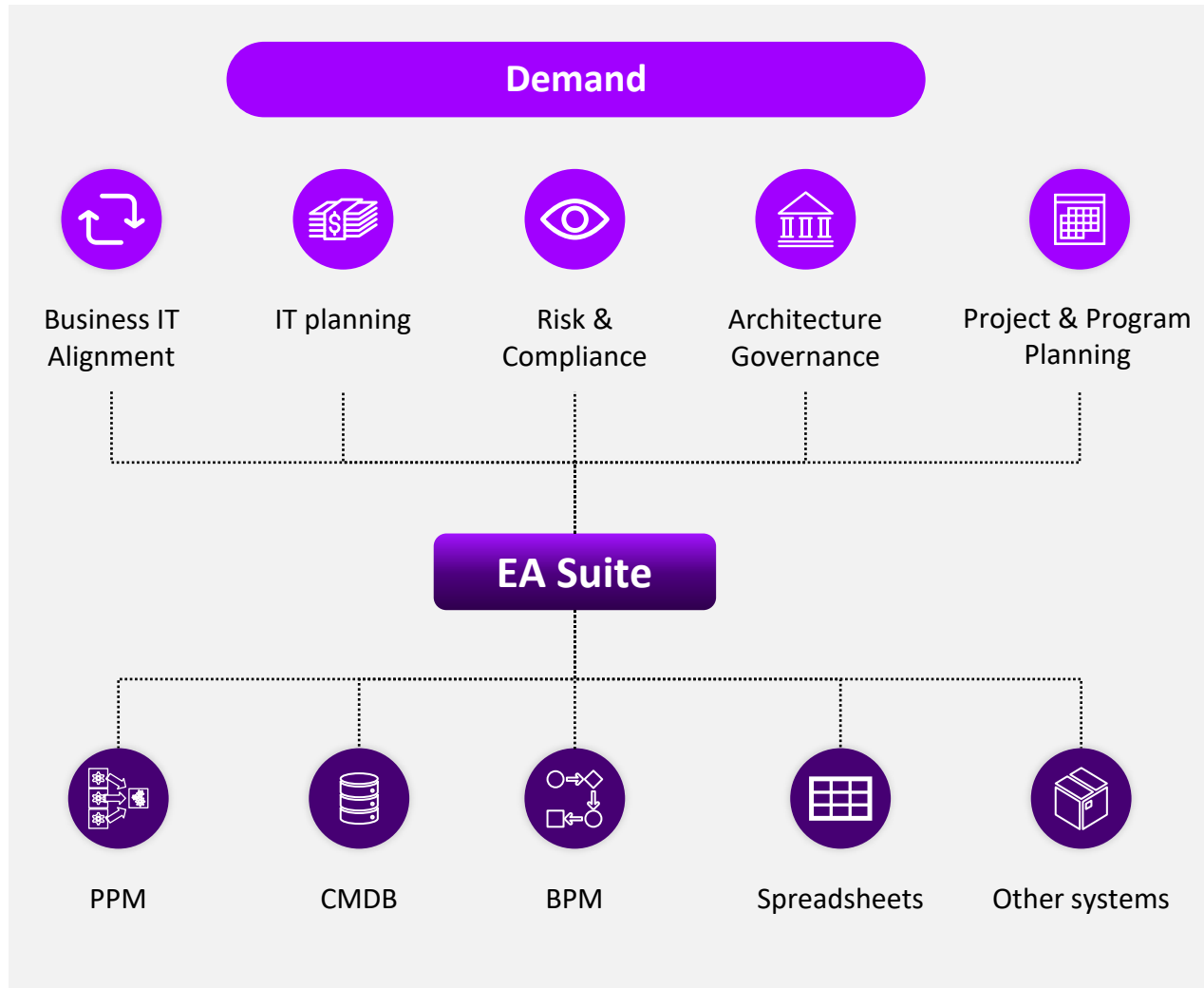


An **architecture decision is not** the derivation of a decision that has either already been made or does not comply with existing standards and guidelines



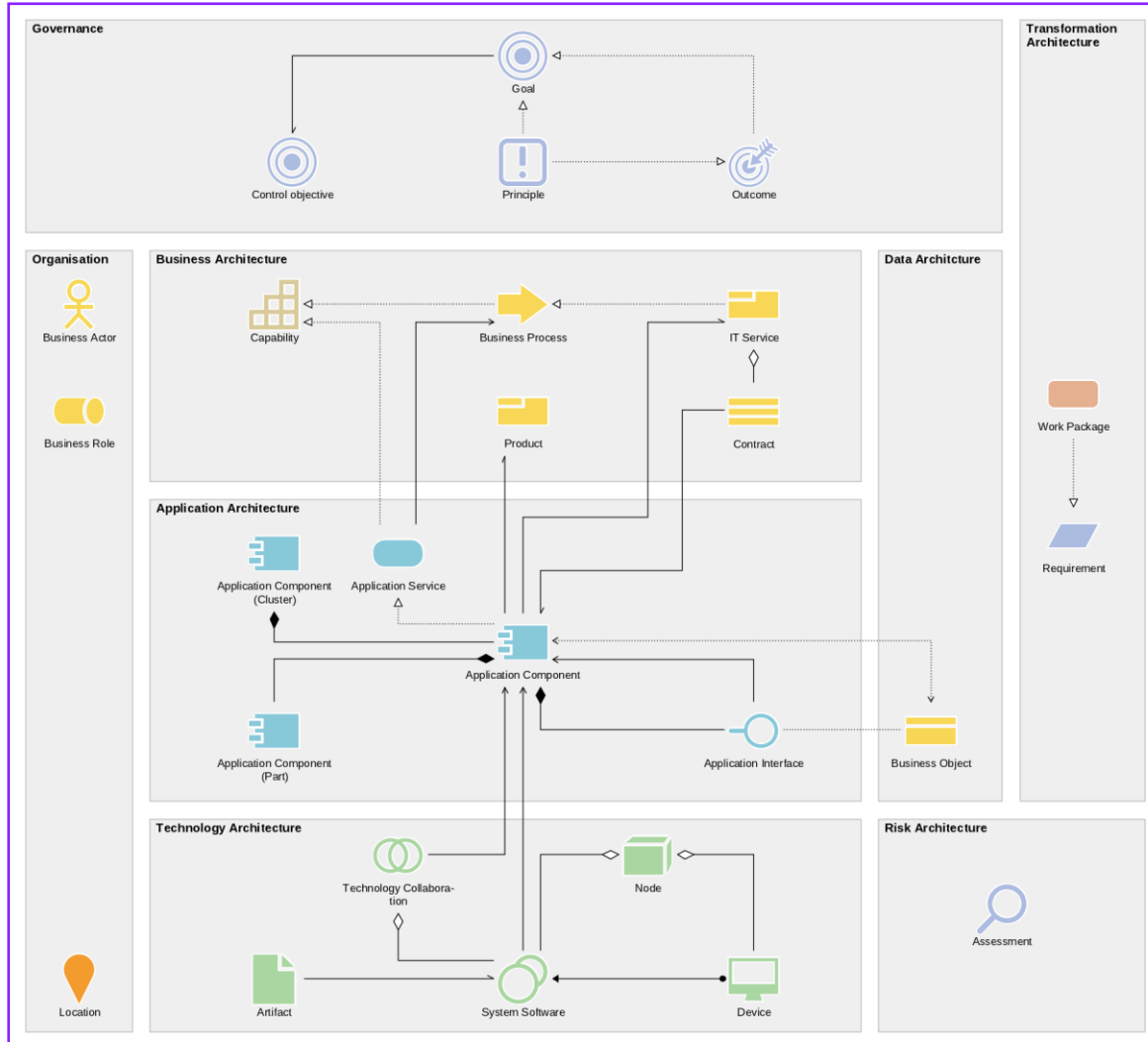
# Tools and methods

## Need for an EA Suite



# Tools and methods

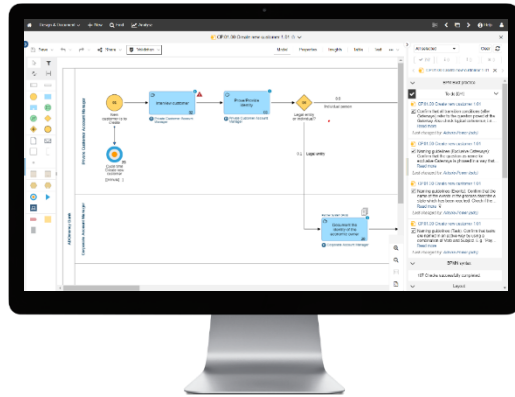
## Hollistic view in ADOIT with ArchiMate



### ArchiMate metamodel

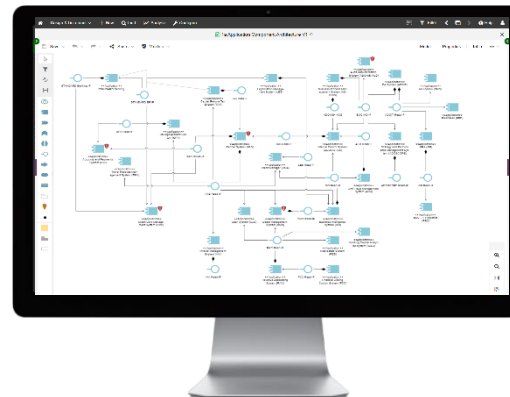
The diversity of perspectives between external stakeholders (clients) and internal representatives (such as Accenture) requires precise and comprehensible communication. A language such as ArchiMate provides a suitable basis for presenting complex concepts and relationships clearly and consistently.

# Enterprise architecture, processes and risks in focus



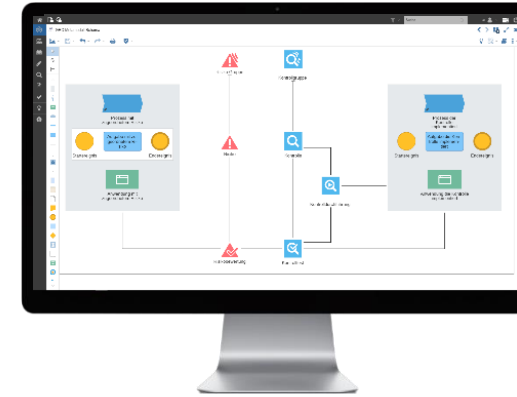
**ADONIS**  
Your professional BPM Suite

- ✓ **Strategic and Operational Business Process Management**
- ✓ **BPMN 2.0 (BPMN fit for business)**
- ✓ Process landscapes
- ✓ Process documentation
- ✓ Analysis and Optimisation



**ADOIT**  
Your professional EA Suite

- ✓ **Planning, recording & controlling the enterprise architecture**
- ✓ **TOGAF + ArchiMate**
- ✓ Business Architecture Management
- ✓ IT Architecture Management
- ✓ Evaluation and assessment of the enterprise architecture



**ADOGRC**  
Your professional GRC Suite

- ✓ **Governance, Risk + Compliance Management**
- ✓ **Integration with GPM and EAM**
- ✓ Record & evaluate risks
- ✓ Derive, test & implement controls
- ✓ Analyse & evaluate
- ✓ Automate workflows

# Agenda

- 01 The takeover of ARZ by Accenture
- 02 Accenture Banking Platform (as a Service)
- 03 Transformation and adaptability
- 04 Tools and methods
- 05 **Insights, questions and answers**





# Insights

## The 3 key points for success

### Adaptability of the architecture

- Flexible architectural approaches are crucial for rapid adaptation to changing business conditions.
- Modern digital platforms emphasize the need for dynamic architectures.

### Change on several levels

- Enterprise architects translate new corporate strategies into IT requirements for the architecture.
- They continue to support cultural change, promote integration and acceptance, and establish a shared vision among employees.

### Helpful frameworks and methods

- The use of a central EAM repository such as ADOIT supports the efficient management of complex IT structures.
- Standardized frameworks such as ArchiMate promote uniformity and improve communication in enterprise architecture.



# Questions & hopefully useful answers





Thank you for your attention.



**ADOIT**

Enterprise Architecture Suite



**BOC Group**

Design Your Enterprise

# Enterprise Architecture Management with ADOIT

Christian Höllwieser

16/09/2024





# ADOIT | Scenarios

Design & Document

Workspaces

Forms

Read &  
Explore

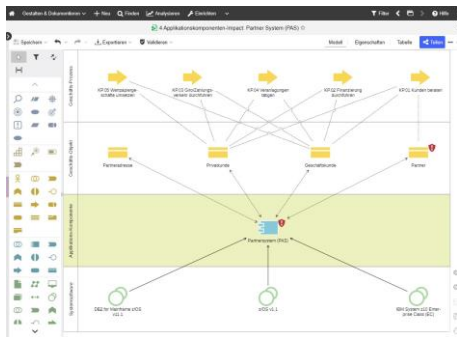
Web Administration

Design

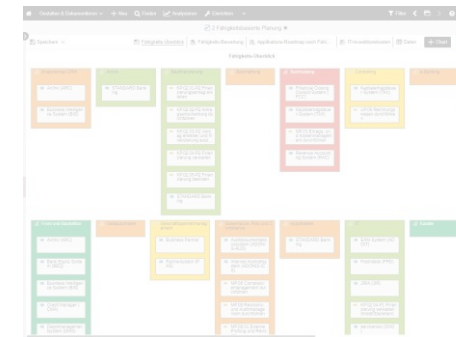
Collaborate

Consume

Configure & Administrate



The screenshot displays the ADOIT Forms interface. It shows a form for creating a new object. The form has a title 'Partnersystem (PAS)' and a description. It includes a section for 'Anwendung zur Verwaltung von Partnerdaten' and a section for 'Welche Prozesse werden von der Applikation unterstützt?'. The interface also includes a sidebar with various tool icons and a top navigation bar.



The screenshot displays the ADOIT Web Administration interface. It shows a dashboard with various administrative tasks. The tasks are arranged in a grid and include 'Benutzer & Zugriffsrechte', 'Bibliotheken & Repositories', 'Attributverwaltung', 'Profilkonfiguration & Login', 'Komponenten konfigurieren', and 'Lizenz verwalten'. The interface also includes a sidebar with various tool icons and a top navigation bar.



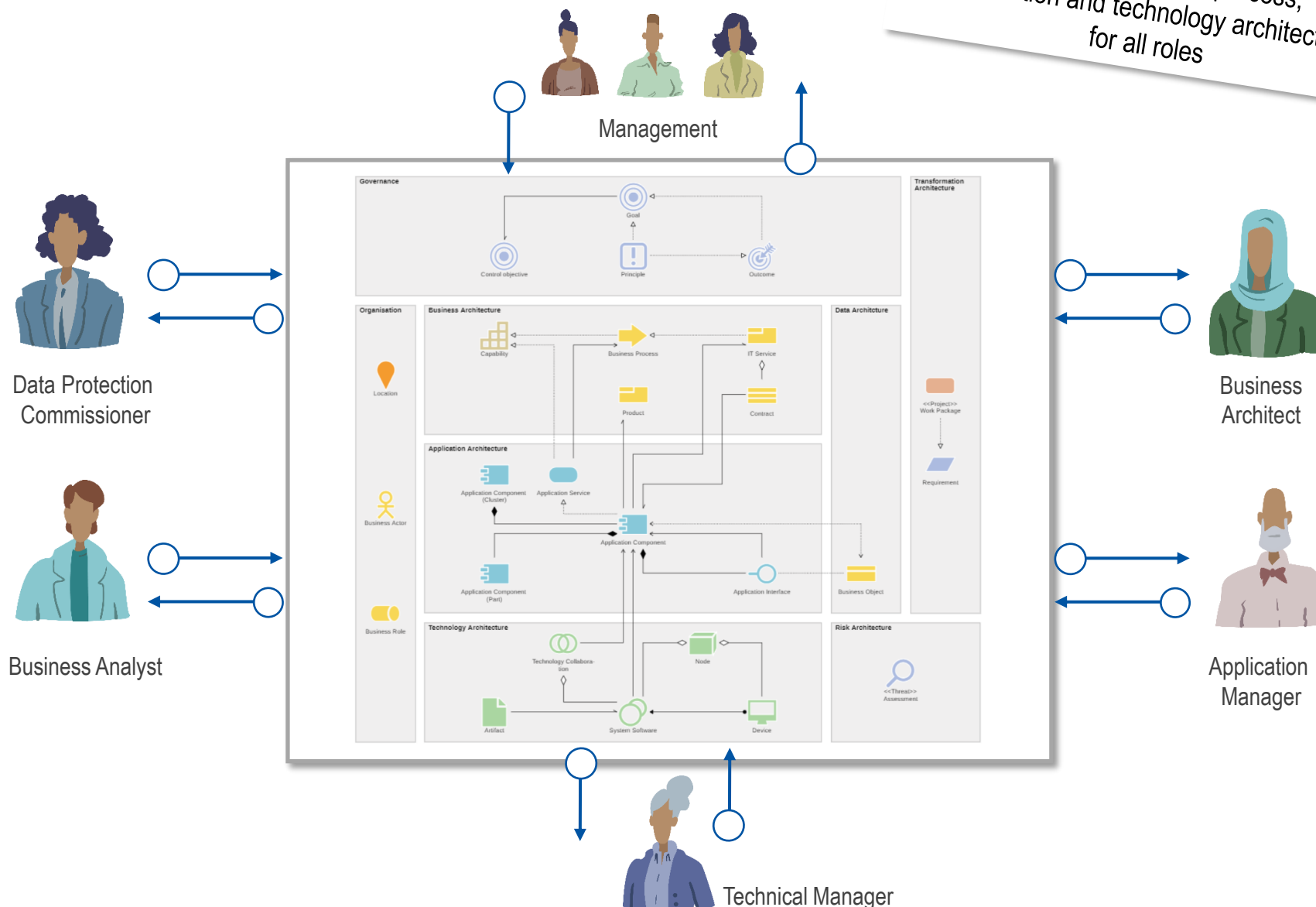
# The global view on your Assets



**ADOIT**

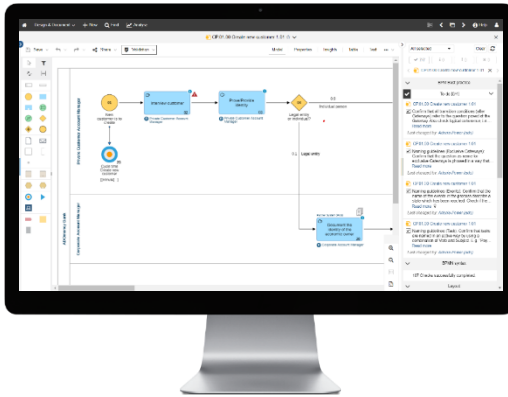
Enterprise Architecture Suite  
by boc-group.com

Strategy, business, process,  
application and technology architecture  
for all roles



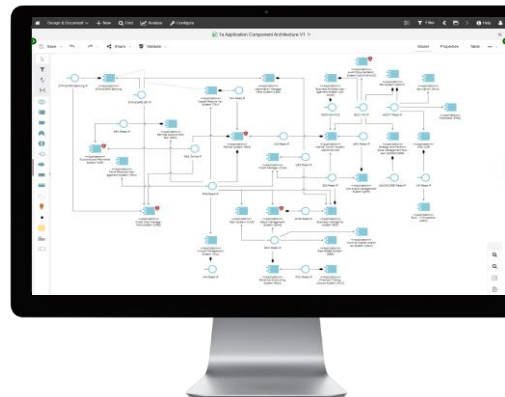
ArchiMate® 3 Tool

# BPM, EAM & GRC



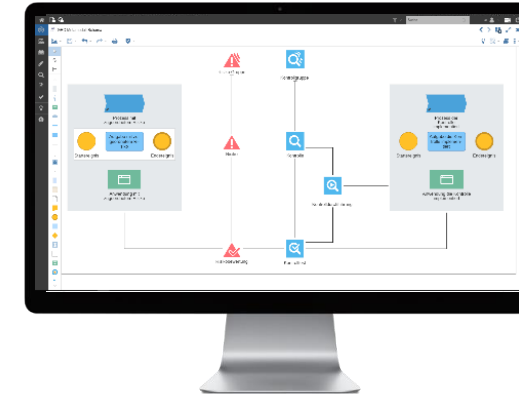
 **ADONIS**  
Your professional BPM Suite

- ✓ Strategic and Operational Business Process Management
- ✓ BPMN 2.0, “BPMN fit for business”
- ✓ Process landscapes
- ✓ Business IT alignment, ITIL
- ✓ Governance, Risk and Compliance
- ✓ Analysis and Optimisation



 **ADOIT**  
Your professional EA Suite

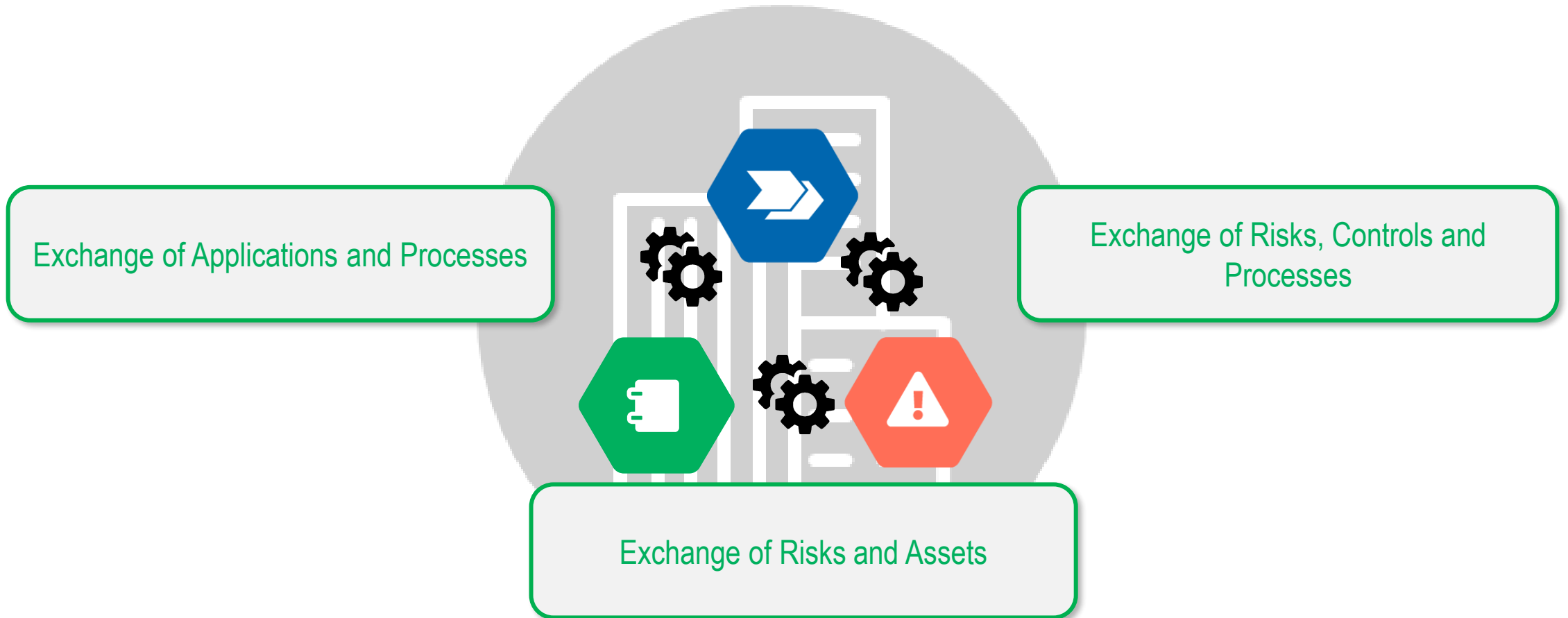
- ✓ Enterprise Architecture
- ✓ TOGAF (The Open Group)
- ✓ Capability Management
- ✓ Business-, Service- & Technology Architecture Management
- ✓ Planning, Data Gathering & Governance
- ✓ Evaluation



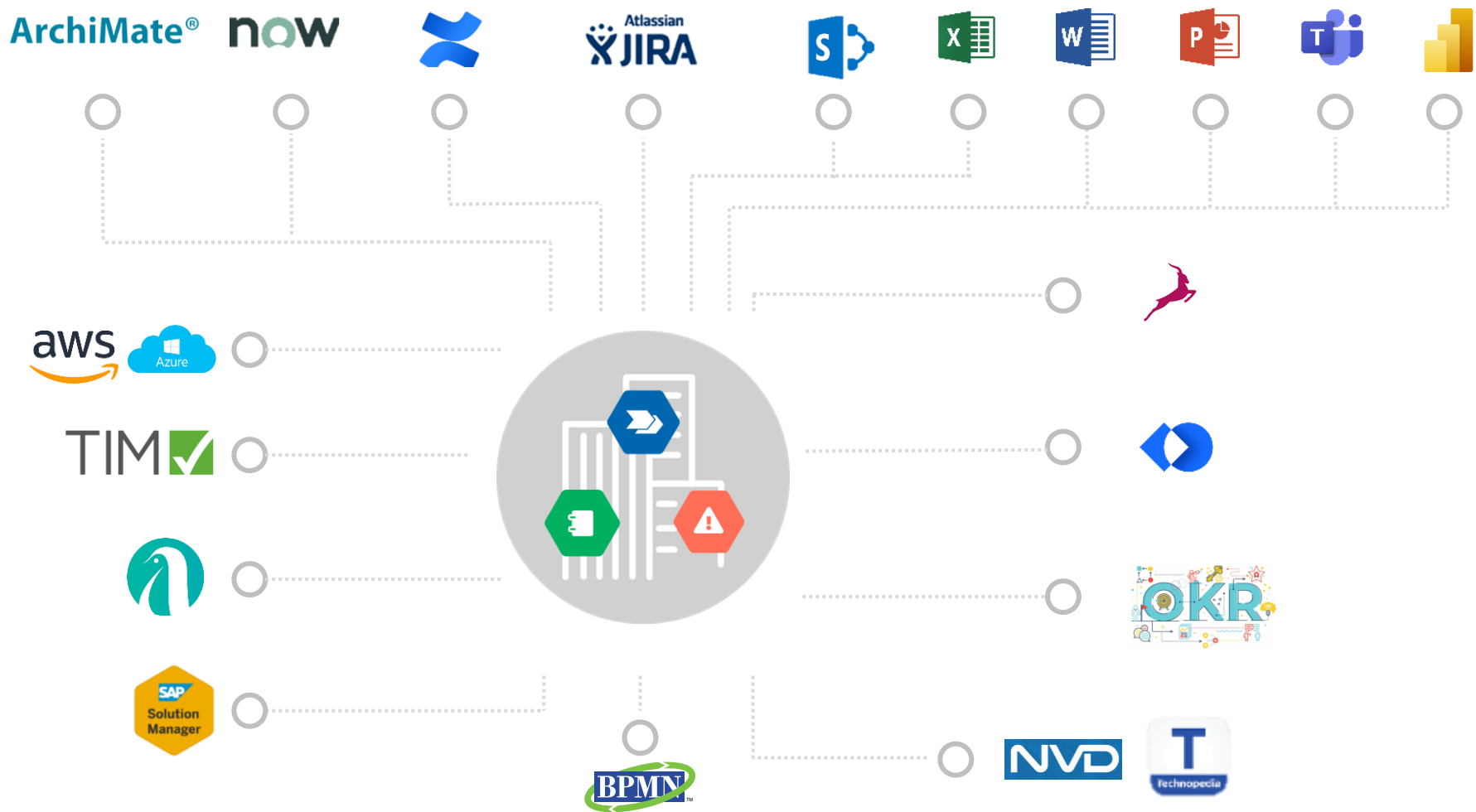
 **ADOGRC**  
Your professional GRC Suite

- ✓ Governance, Risk & Compliance Mgt.
- ✓ Capture & assess risks
- ✓ Derive, review & carry out controls
- ✓ Analyse & evaluate
- ✓ Automate workflows
- ✓ Integration with BPM and EA

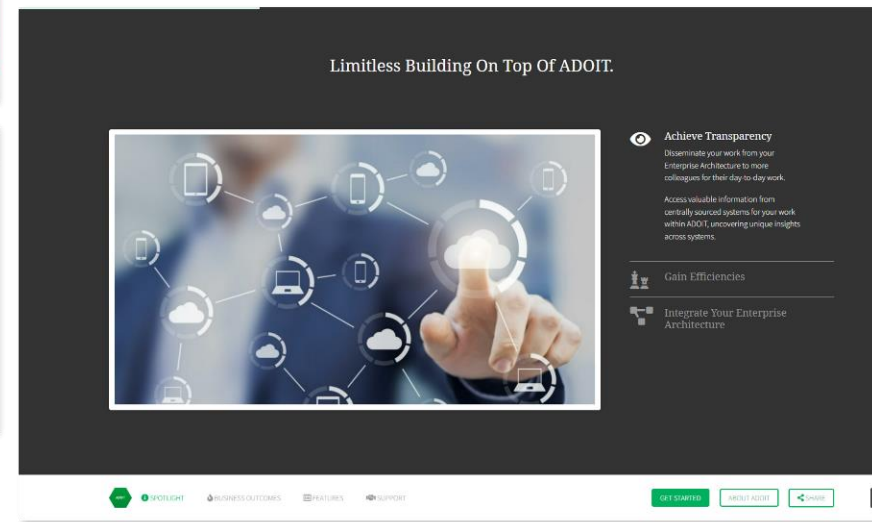
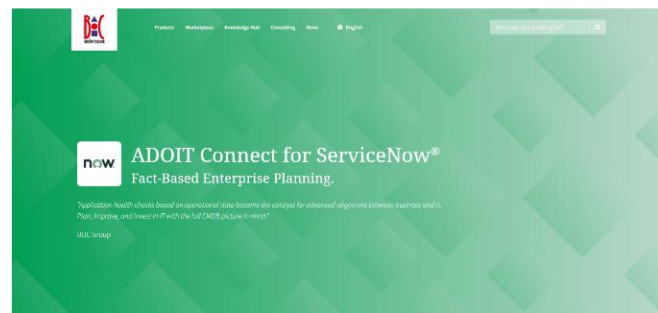
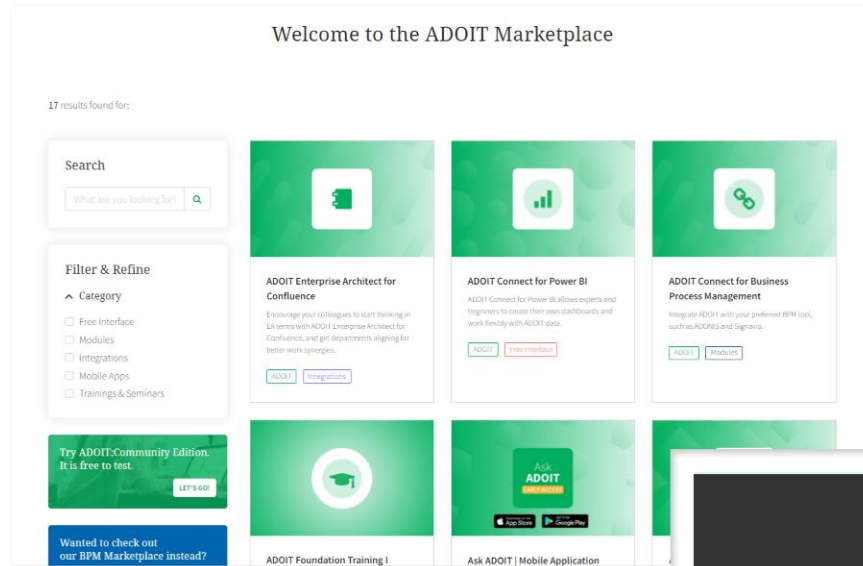
# BPM, EAM & GRC working together



# Integration in the Ecosystem



# Visit our Market Place



[The ADOIT Marketplace | Enterprise Architecture by BOC Group \(boc-group.com\)](https://www.boc-group.com)



Thank you for your attention & feel free to  
visit us at the ADOIT Product Booth



**ADOIT**  
Enterprise Architecture Suite