



Strategic Partner Meeting 2022



IT ALL STARTS HERE

BERLIN | LONDON | MADRID | PARIS | TURIN | WARSAW



How to Accelerate Digital Transformation with ADOIT: EA Approach and Quick Wins

Christelle MEKUATE, Digital Architect

Agenda

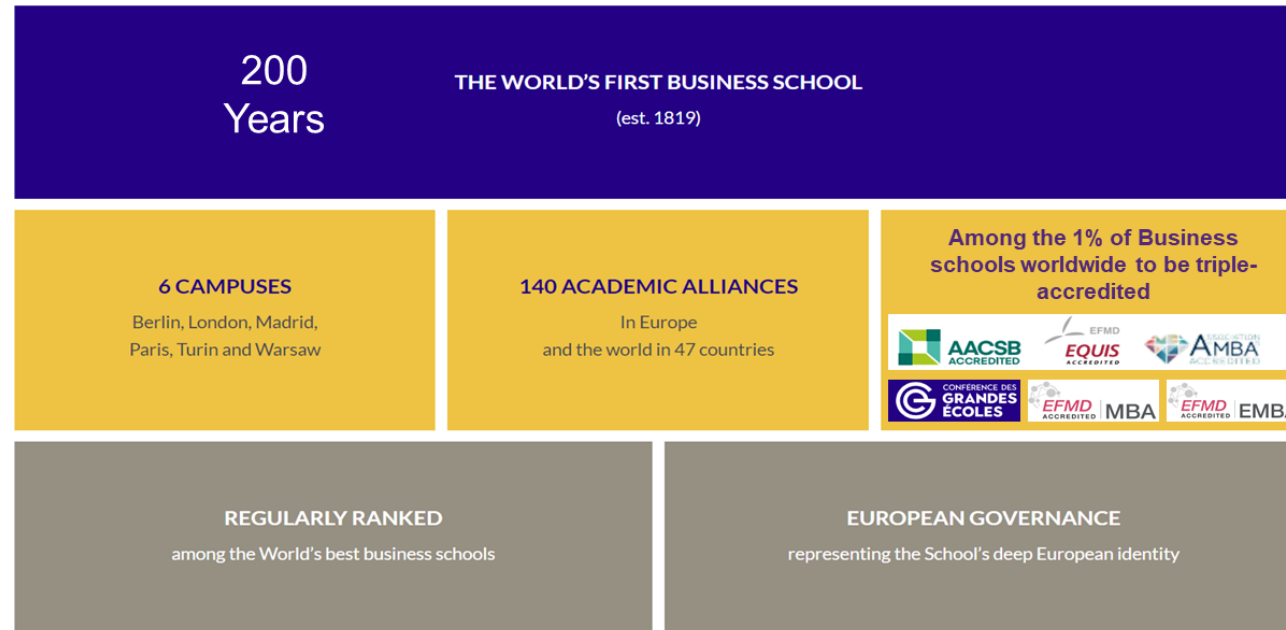
- 1** Enterprise architecture as an analysis framework to help express requirements
- 2** ADOIT to support digital transformation projects
- 3** Implementation of a tool-based EA approach, first hurdles, feedback and best practices

Agenda

- 1** Enterprise architecture as an analysis framework to help express requirements
- 2** ADOIT to support digital transformation projects
- 3** Implementation of a tool-based EA approach, first hurdles, feedback and best practices

Introduction : ESCP Business School

FACTS & ACCREDITATIONS



7,100+ Students in degree programmes representing 120 different nationalities	5,000 Participants (Executive Education)	160 Research-active professors representing over 33 nationalities across our campuses	800+ Practitioners and experts	100+ Nationalities across 6 campuses	65,000 Active alumni in over 150 countries in the world
---	--	---	--	--	---

PROGRAMS (+160)

FULL PROGRAMMES

- [Bachelor in Management \(BSc\)](#)
- [Pre-Master Year](#)
- [Master in Management](#)
- [Specialised Masters / MSc](#)
- [MBA in International Management](#)
- [Doctoral Programmes](#)

PART-TIME PROGRAMMES

- [Certificates and Short Programmes](#)
- [Executive Masters](#)
- [Executive MBA \(EMBA\)](#)
- [Global Executive Ph.D.](#)

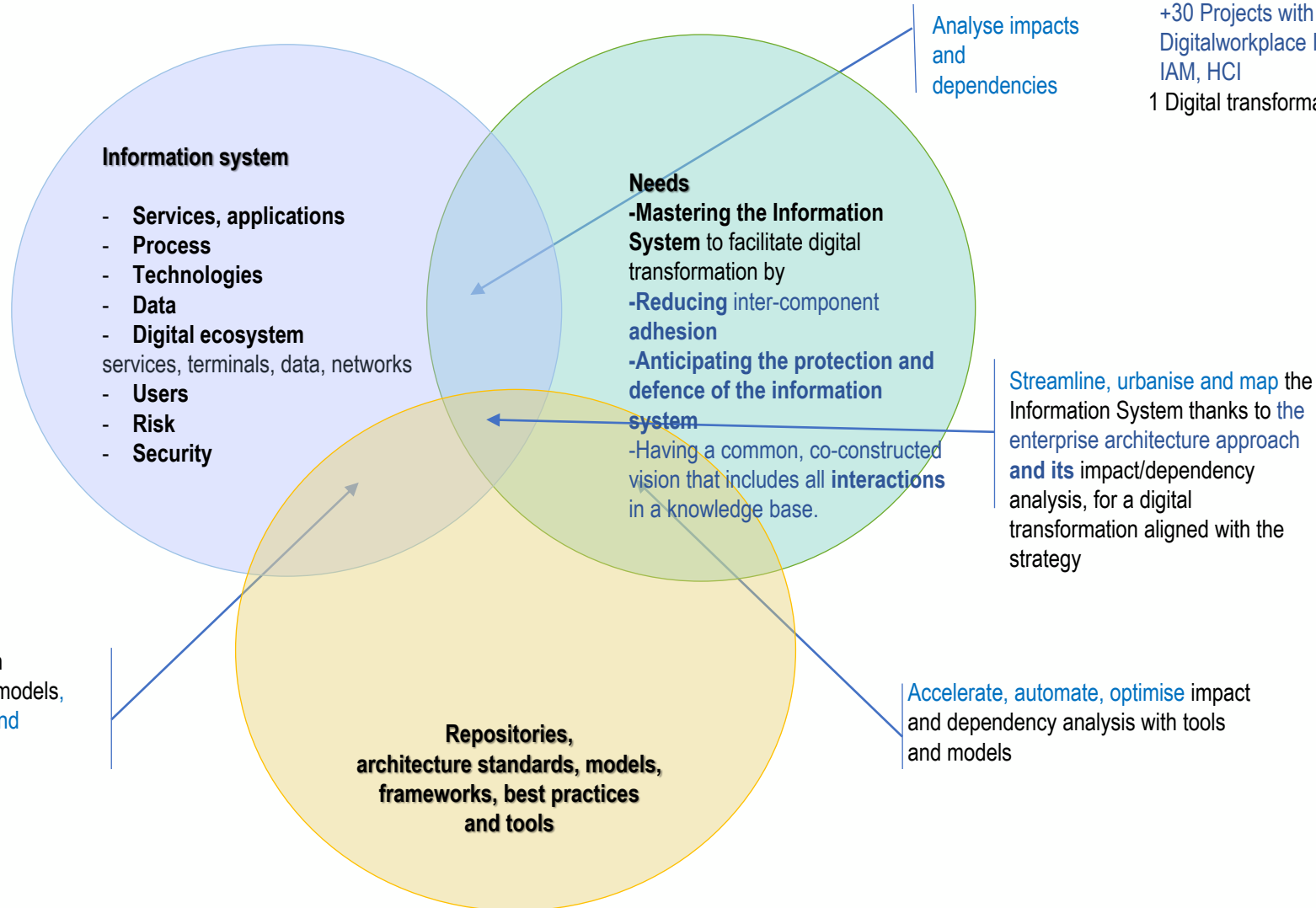
MORE

- [Online Programmes](#)
- [Summer Courses](#)

What do we want to achieve?

In full digital transformation for 3 years
2020 : COVID 19

+30 Projects with PMO: Digital Learning,
Digitalworkplace ITSM,SIRH ,Fi, Data Lab,
IAM, HCI
1 Digital transformation plan.



Mapping the information system in compliance with the repositories, models, business, functional, application and technical architecture.

Constraints

- ▶ This is a first for ESCP
- ▶ Misunderstanding of the profession of Enterprise Architect
- ▶ Too many emergencies :+30 Projects with PMO: Digital Learning, Digitalworkplace ITSM,SIRH ,Fi, Data Lab, IAM, HCI
- ▶ Immediate needs that do not always correspond to the "order" of the architectural process

How will enterprise architecture help ESCP meet the challenges of its digital transformation?

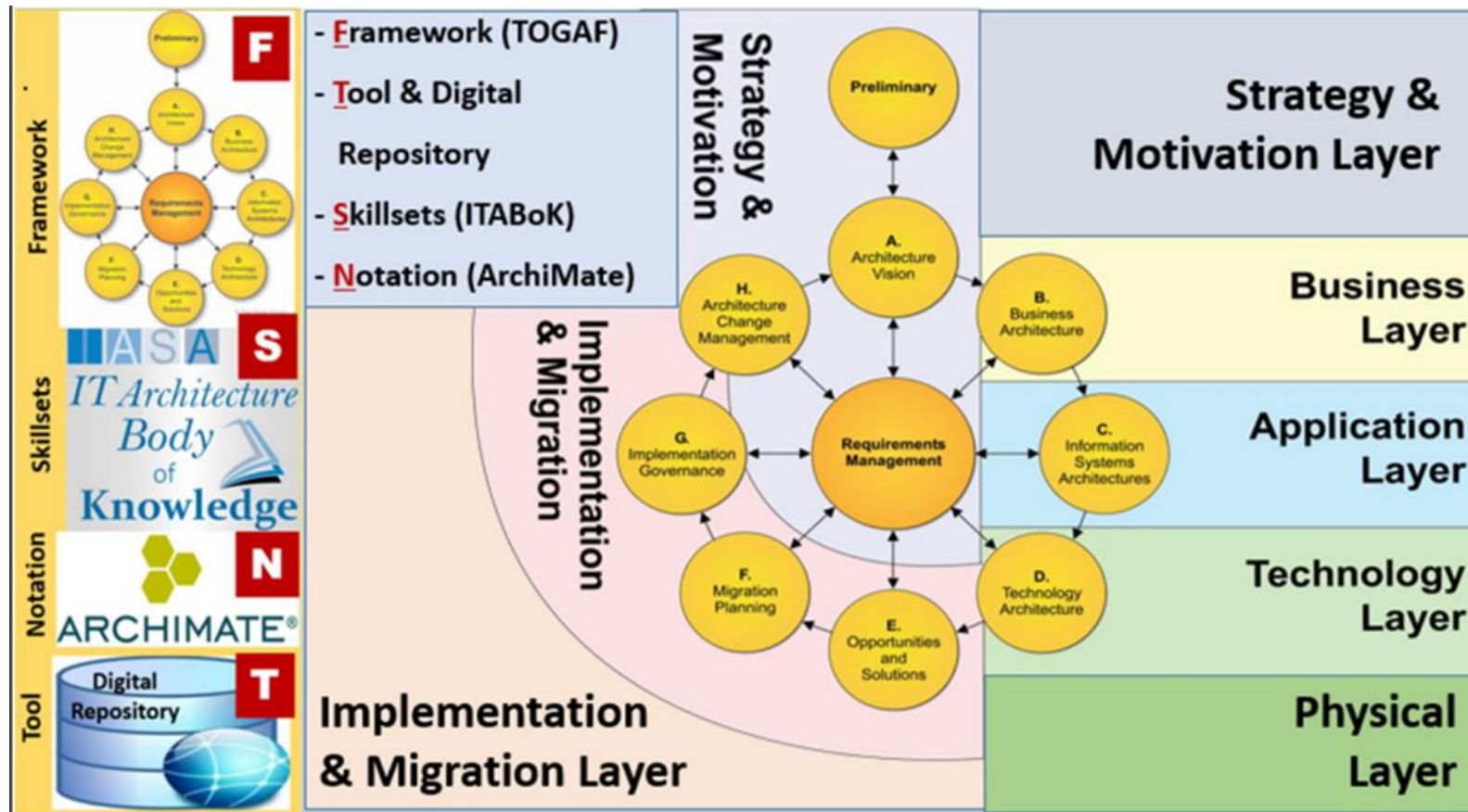
- **Improving the customer experience** by digitalising processes and achieving operational excellence
- **Streamlining IT** by optimising the application portfolio and mitigating technology risks
- **Adopting strategic IT planning** and building a solid business architecture
- Making **data governance** a strategic approach

Interactions among repositories, standards, models and best practices

TOGAF

Best practices
 State Architecture Framework
 ANSSI Information System Mapping Guide
 Club Urba EA
 IT architecture body of Knowledge
 Integration Framework

ARCHIMATE
 BPMN
 TOGAF
 APQC
 ISO 9001



BPMN

APQC

eTOM

ARCHIMATE

TAM

SID

ARCHIMATE

ITIL

State Infrastructure Application
 Reference Framework
 ARCHIMATE

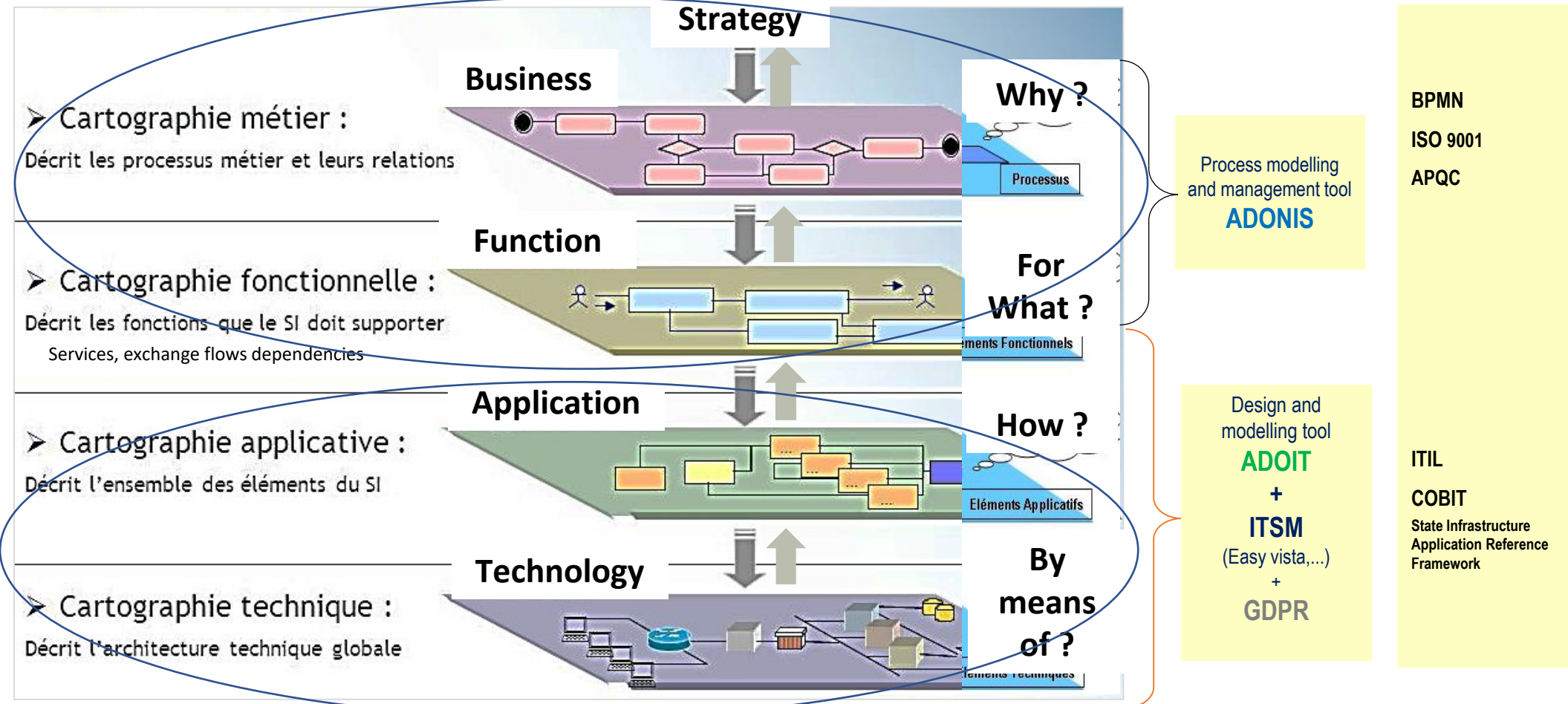
Information /data Architecture

Security Architecture

Cross-cutting ITIL, COBIT, CMMI, EA Maturity Model, EBIOS, ISO 9001, TOGAF, ISO2700x

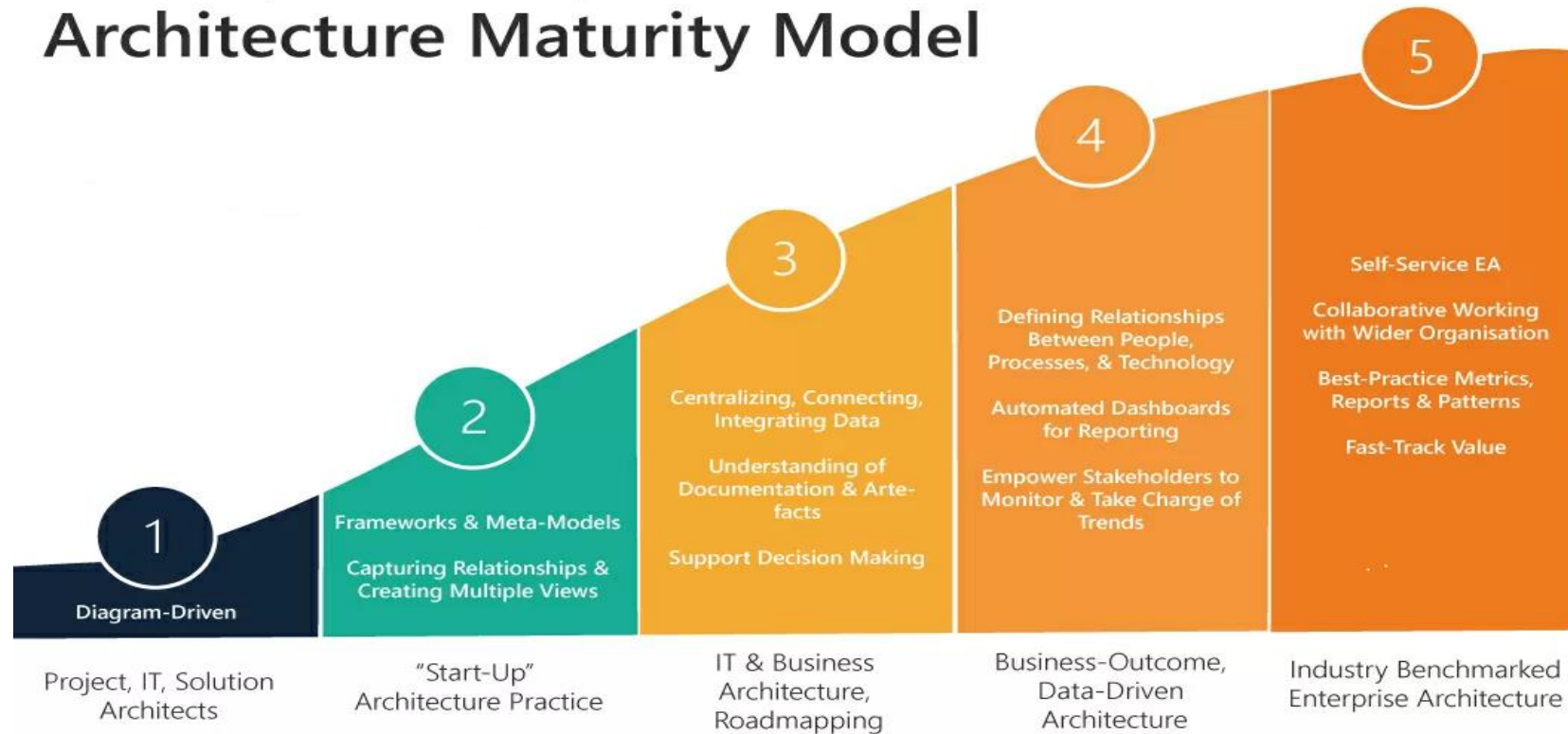
How to accelerate digital transformation with ADOIT

Implement the organization strategy through EAM and BPM using ADOIT and ADONIS

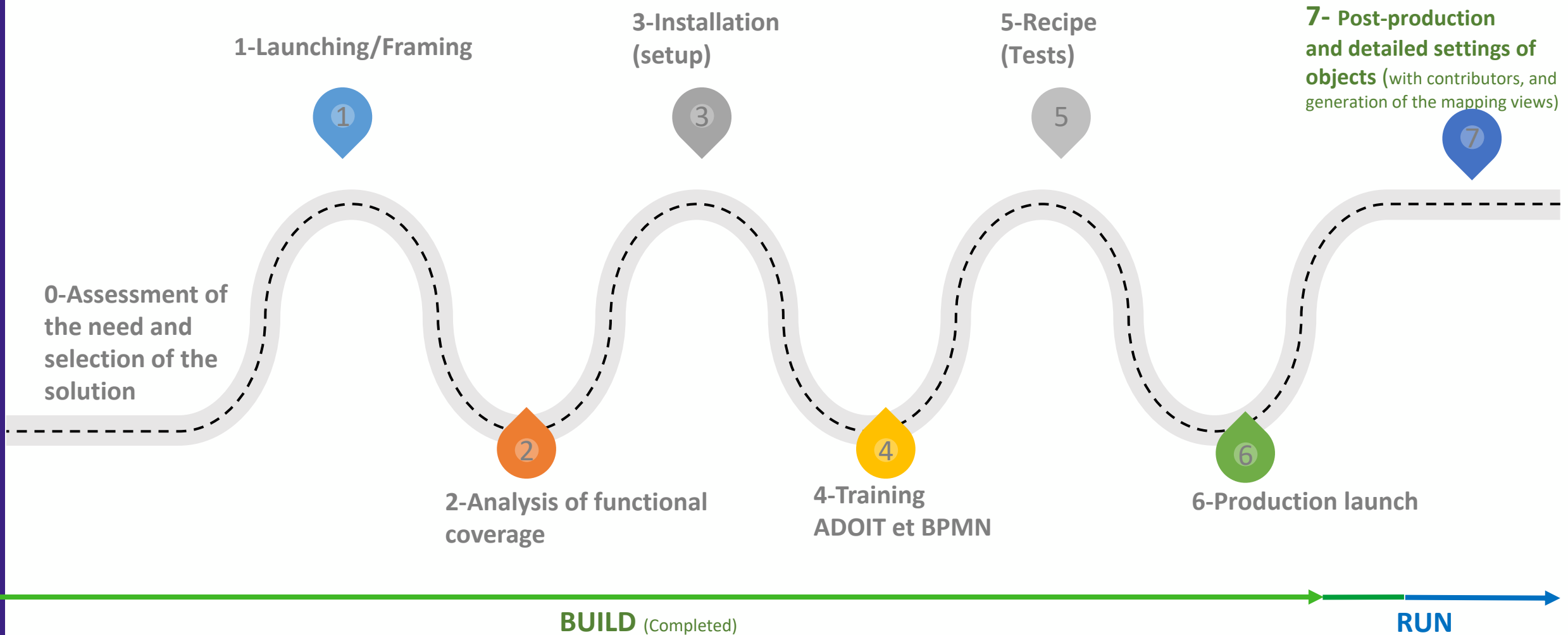


Positioning the company in the EA Maturity Models? CMMI and the process model

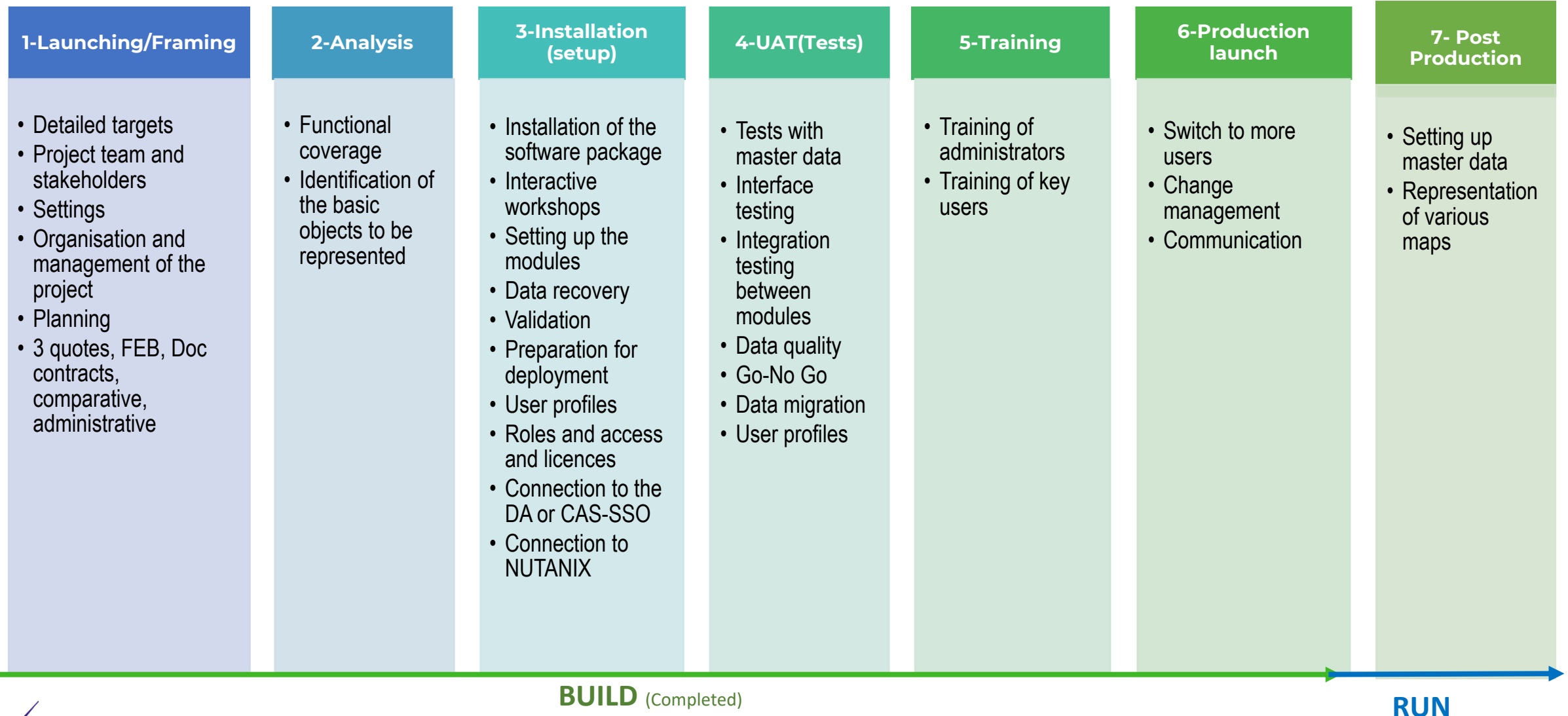
Start-Up, Scale-Up and Data-Driven: Architecture Maturity Model



What has been done?: BUILD and start of the RUN



What has been done?: BUILD and start of the RUN Detail



What has been done: RUN

1-Recycling workshop and fine-tuning of maps with contributors (application/technology managers)

3-Validation of the Information System map 2021

5-Meeting the architectural and legal requirements of GDPR compliance

2-Presentation of the Data Catalogue

4-Review and validation of the technology repository and document templates

6-GAP and new maps

-Who is responsible of what?
-Recycling of contributors ON ADOIT

-Information System Data Catalogue
-Application portfolio
-Technology portfolio

-Technology repository
-Document templates

BUILD

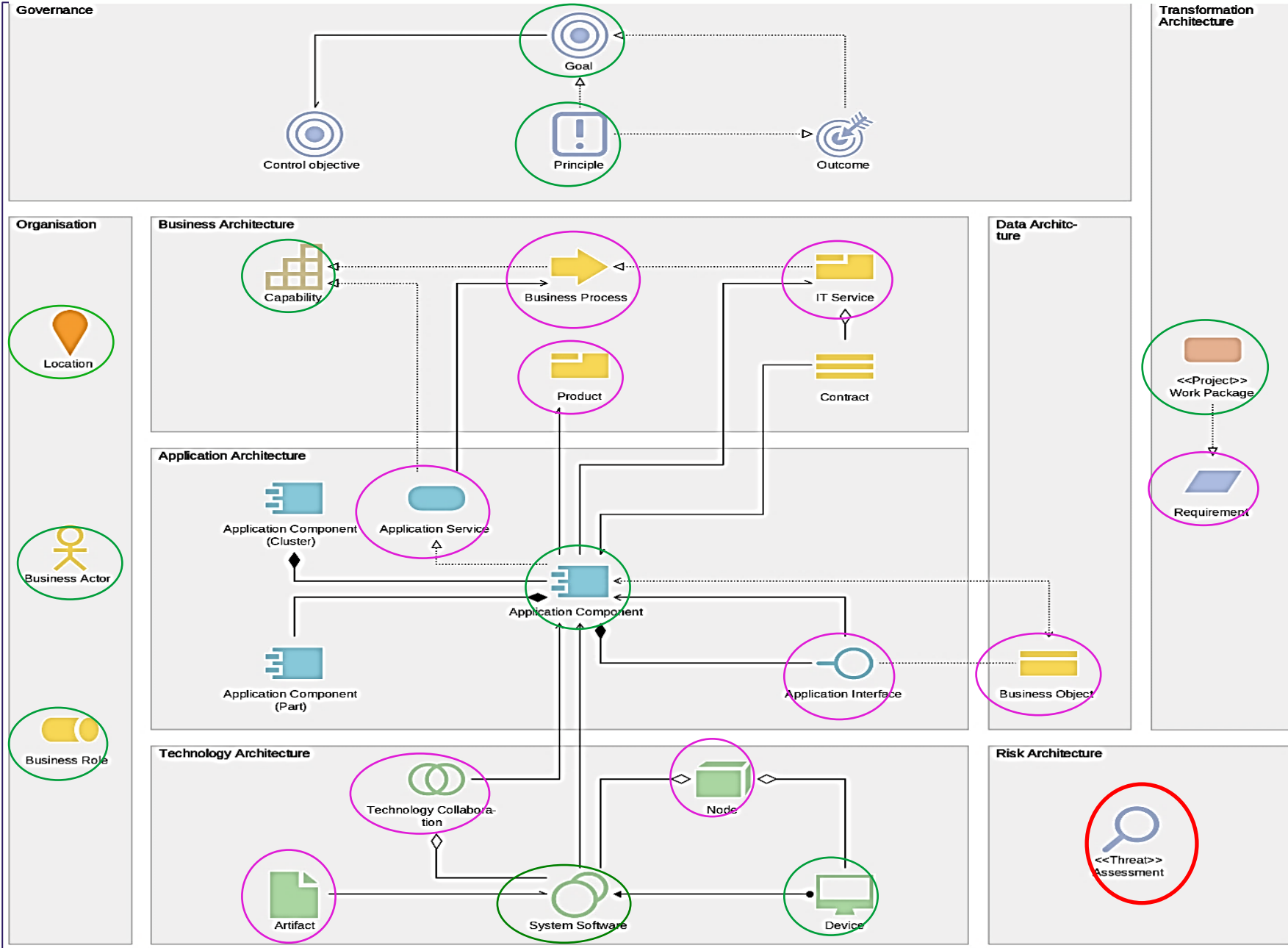
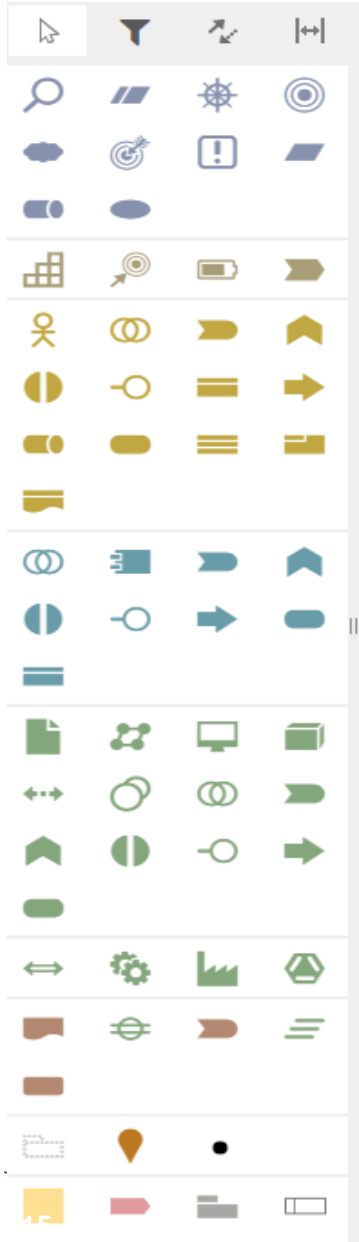
(Completed)

RUN

Agenda

- 1** Enterprise architecture as an analysis framework to help express requirements
- 2** ADOIT to support digital transformation projects
- 3** Implementation of a tool-based EA approach, first hurdles, feedback and best practices

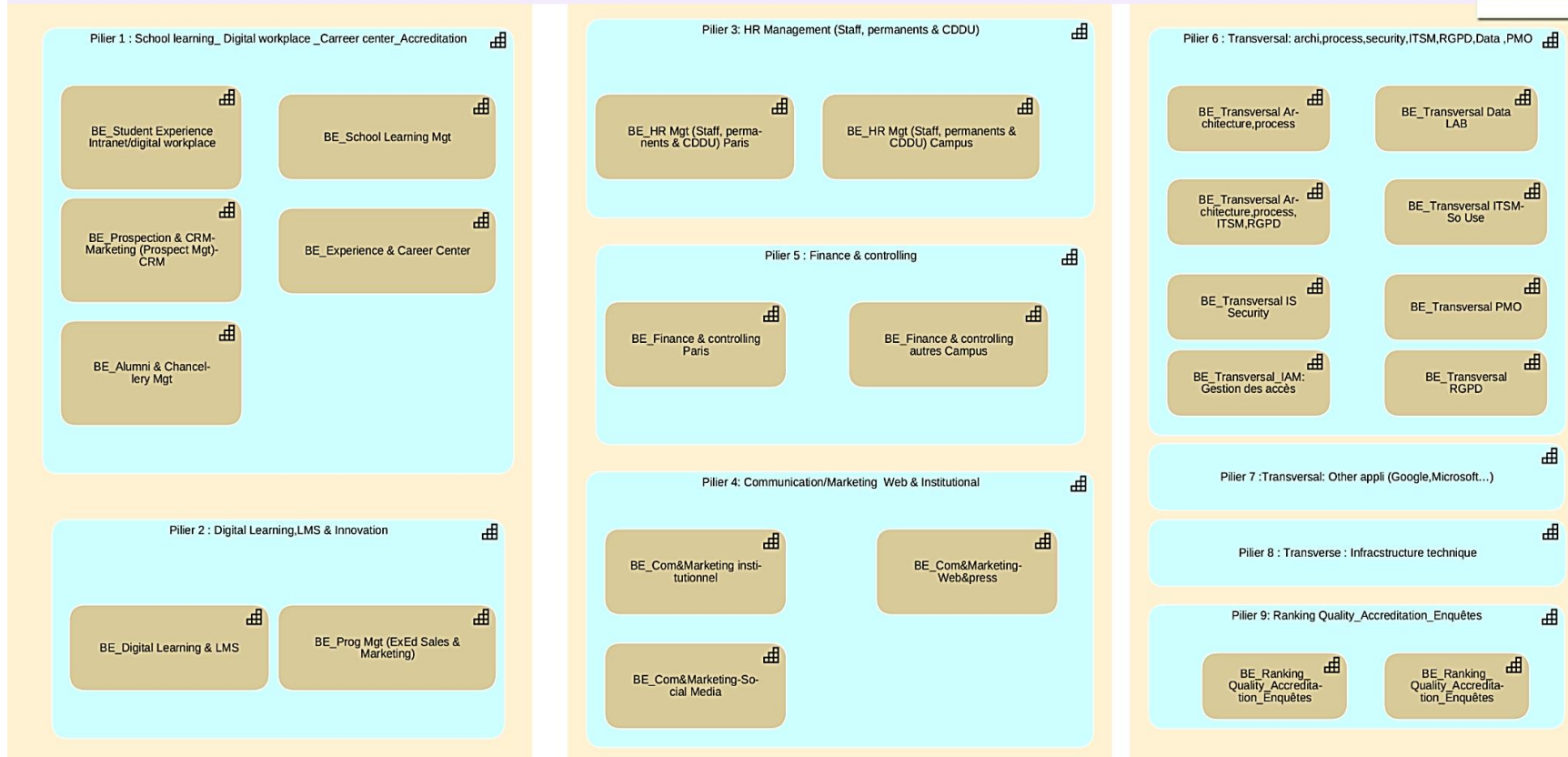
ARCHIMATE meta Métamodèle ARCHIMATE dans l'outil ADOIT (Architecture d'entreprise)



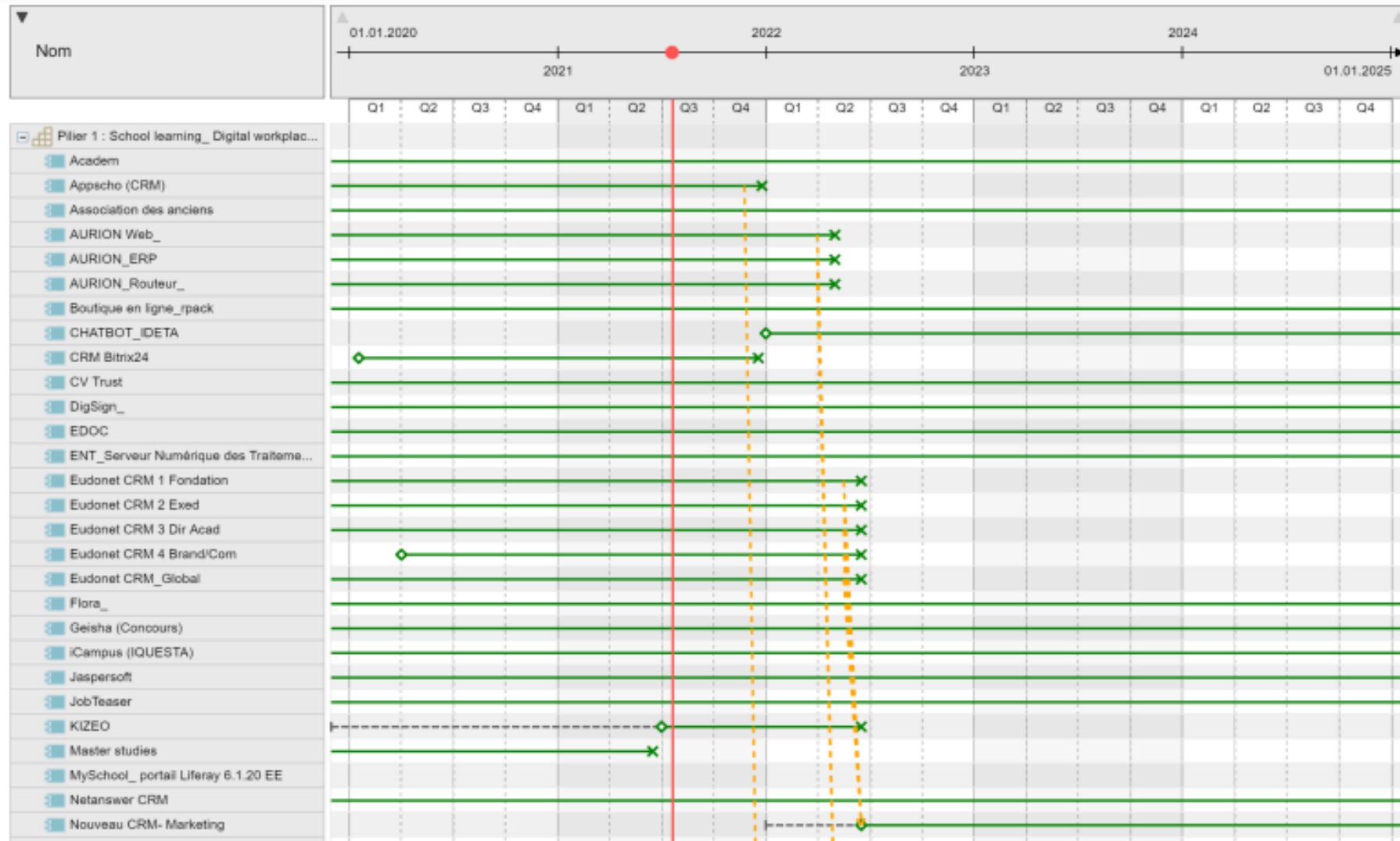
- Requirements/objects 90% fulfilled
- Objects to be filled in by contributors
- To be filled in at the end of the security audit

Business capabilities (Map)

Carte des capacités et des Biens essentiels /Business Capability Map



Application roadmap, project, technology

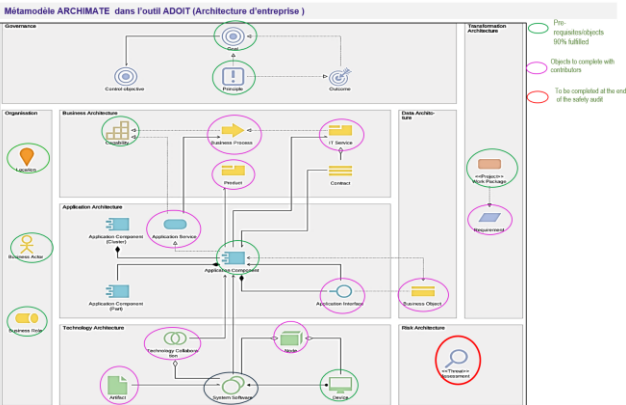


How to accelerate digital transformation with ADOIT

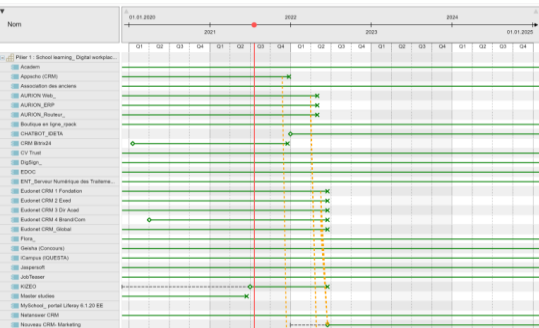
Accelerate digital transformation projects and initiatives with ADOIT

Define modelling conventions and a roadmap

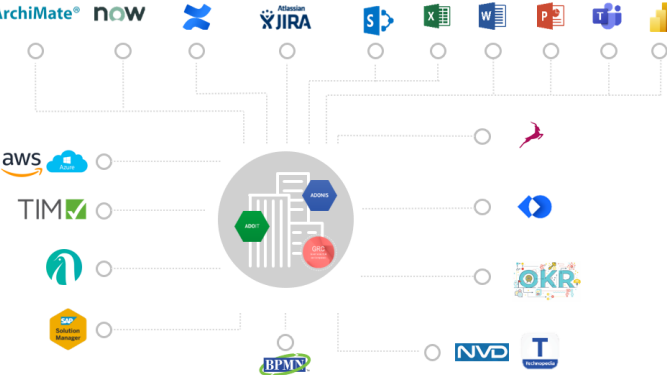
Build capability map



Exploit the EA data



Integrate ADOIT with your ecosystem



In Progress

- ADOIT-Process ADONIS
- ADOIT-Projects

Next Steps

- ADOIT-GDPR GDPR Module
- ADOIT-ITSM
- ADOIT-Risk

How does ADOIT integrate with our ecosystem?

In progress

ADOIT-Process ADONIS

ADOIT-Projects

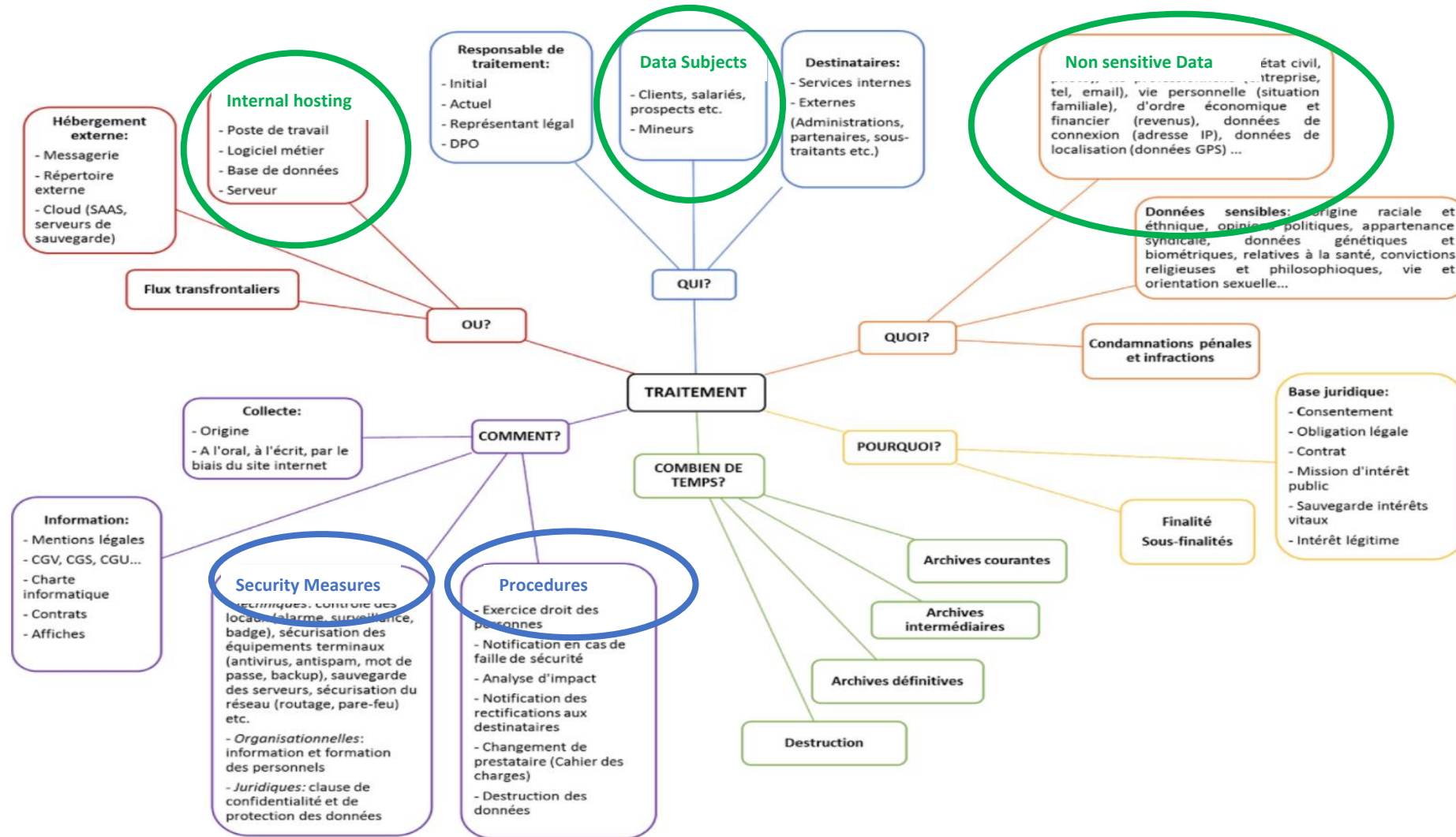
Next steps

ADOIT-GDPR (Module to be implemented)

ADOIT-ITSM

ADOIT-Risk

ADOIT/ADONIS-GDPR



Agenda

- 1** Enterprise architecture as an analysis framework to help express requirements
- 2** ADOIT to support digital transformation projects
- 3** Implementation of a tool-based EA approach, first hurdles, feedback and best practices

Build completed, time for the RUN:

How to combine the collective EA approach and co-construction with the stakeholders?

Business Analyst	<i>How does my organization look like? Have the business objectives been met?</i>
Functional Architect	<i>Which applications support which processes today and tomorrow ? Which processes will be affected by an application change ? Which application services are supported by which application components?</i>
Application Owner	<i>Which applications exist ? Who is responsible (RACI) for which application ? How does the application architecture look like ? What is the life cycle state of my applications ?</i>
Technical Architect	<i>Which applications are supported by which technologies ? How does the technology roadmap look like ? What are the consequences of a technological change ?</i>
Data Owner	<i>Which business objects are used by which applications ? Is data integrity respected?</i>
Project Manager	<i>Which projects are to be carried out and for how long ?</i>

Actors' roles in the ADOIT tool and how they correspond to those of ESCP

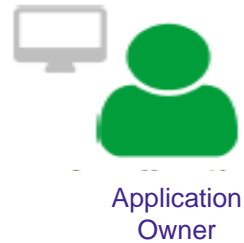
Role: Solution Architect

Roles that correspond to ESCP

- Business analyst
- Project managers
- Process owner
- PMO



- Project managers
- application manager
- Business analyst



- Infra and Techno Dir
- Infra Team

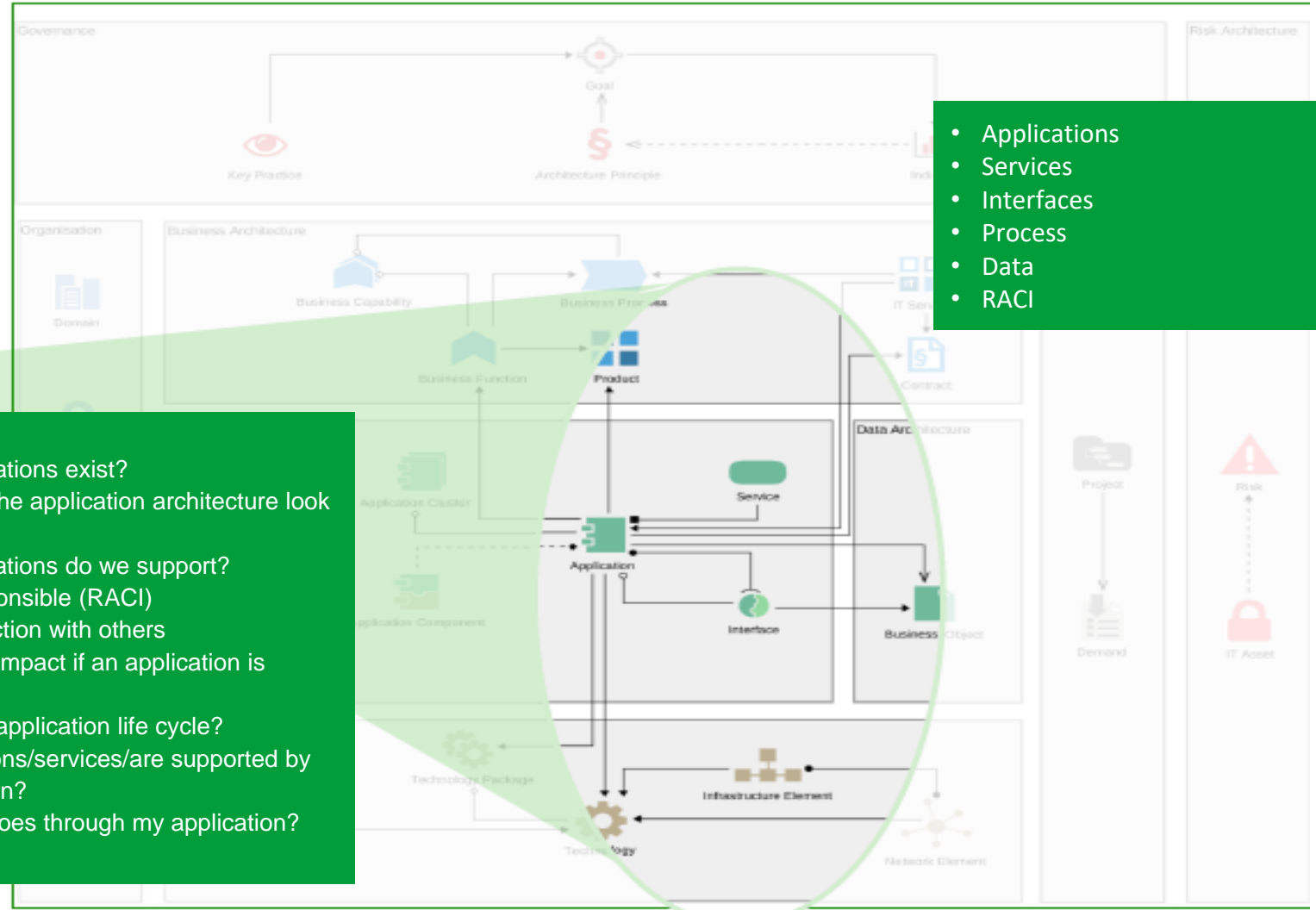


- Digital Architect
- ADTD
- DTD



- What applications exist?
- What does the application architecture look like?
- What applications do we support?
- Who is responsible (RACI)
- What interaction with others
- What is the impact if an application is deleted?
- What is the application life cycle?
- What functions/services/are supported by my application?
- What data goes through my application?

- Applications
- Services
- Interfaces
- Process
- Data
- RACI



Implementation of a tool-based EA approach, feedback on first hurdles and best practices

Best practice

1. Understanding the strategy (role of IT, decision makers)
2. Thinking big but starting small (Iterations, increments, quick wins)
3. Translating it into IT
4. Creating transparency
5. Setting IT objectives
6. Defining the roadmap
7. Harmonising and governing
8. Getting feedback and improving
9. Giving access to as many actors as possible, coaching and mentoring
10. Keeping the repository up to date (Including a step to update the map in Information System evolution projects)
11. Communicating

Some useful documents

1. BOC Communication Kit
2. Technology Repository
3. List of applications by column
4. Application characteristics collection sheet (for those who hesitate to explore the tool)

“ A map is only of use if it is communicated as widely as possible and if the information it contains is reliable and up-to-date.”
ANSSI

Useful links

- ▶ ARCHIMATE Cook Book <http://www.hosiaisluoma.fi/ArchiMate-Cookbook.pdf>
- ▶ TOGAF from The Open Group <https://www.opengroup.org/togaf>
- ▶ <https://blog.opengroup.org/2020/06/23/togaf-9-certification-passes-100000-milestone/>
- ▶ <https://www.hnkpmgciosurvey.com/>
- ▶ <https://www.eapprincipals.com/>

THANK YOU

Q & R



Christelle MEKUATE

Digital Architect

cmekuate@escp.eu